

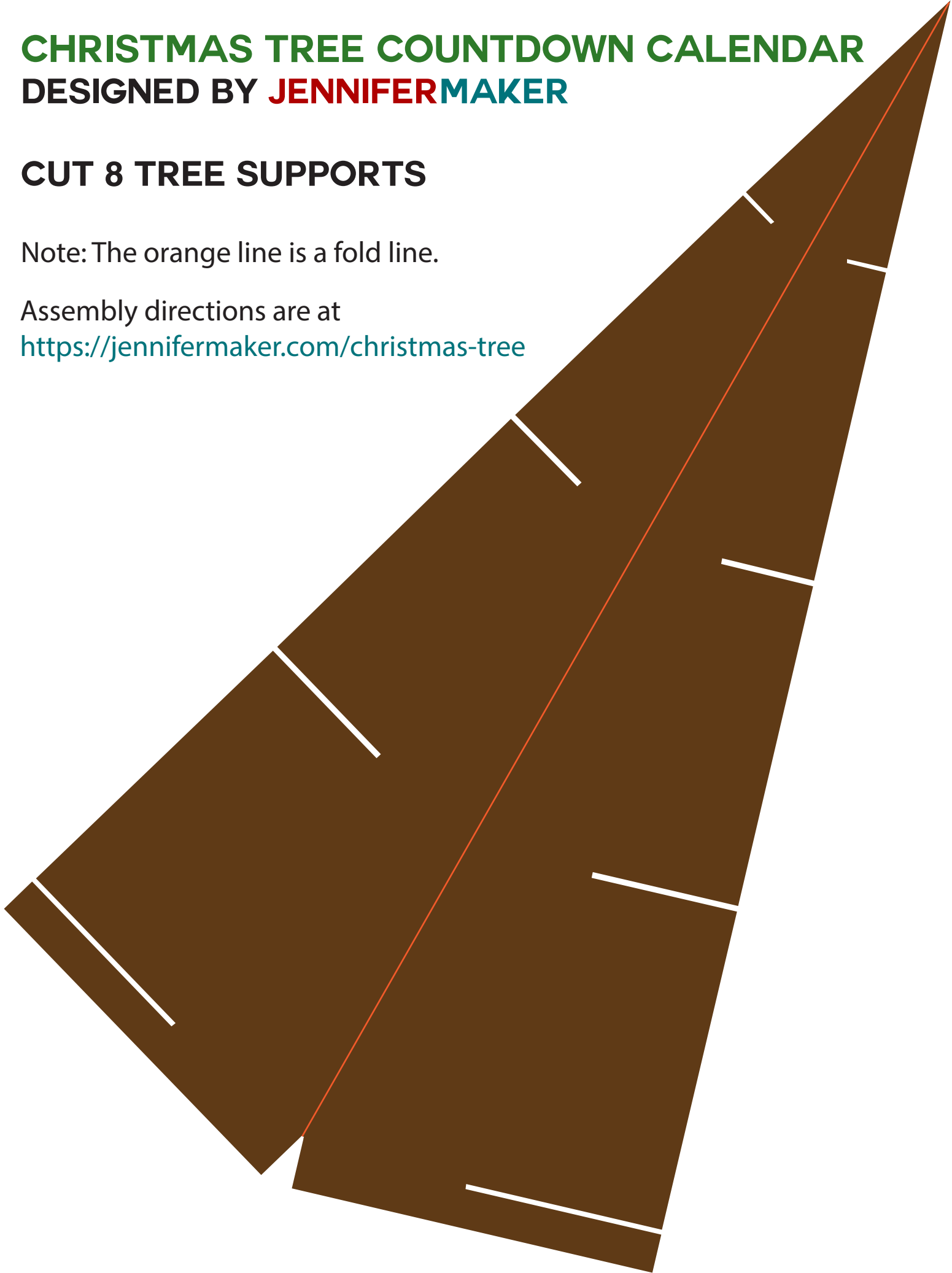
# CHRISTMAS TREE COUNTDOWN CALENDAR

DESIGNED BY **JENNIFER**MAKER

## CUT 8 TREE SUPPORTS

Note: The orange line is a fold line.

Assembly directions are at  
<https://jennifermaker.com/christmas-tree>

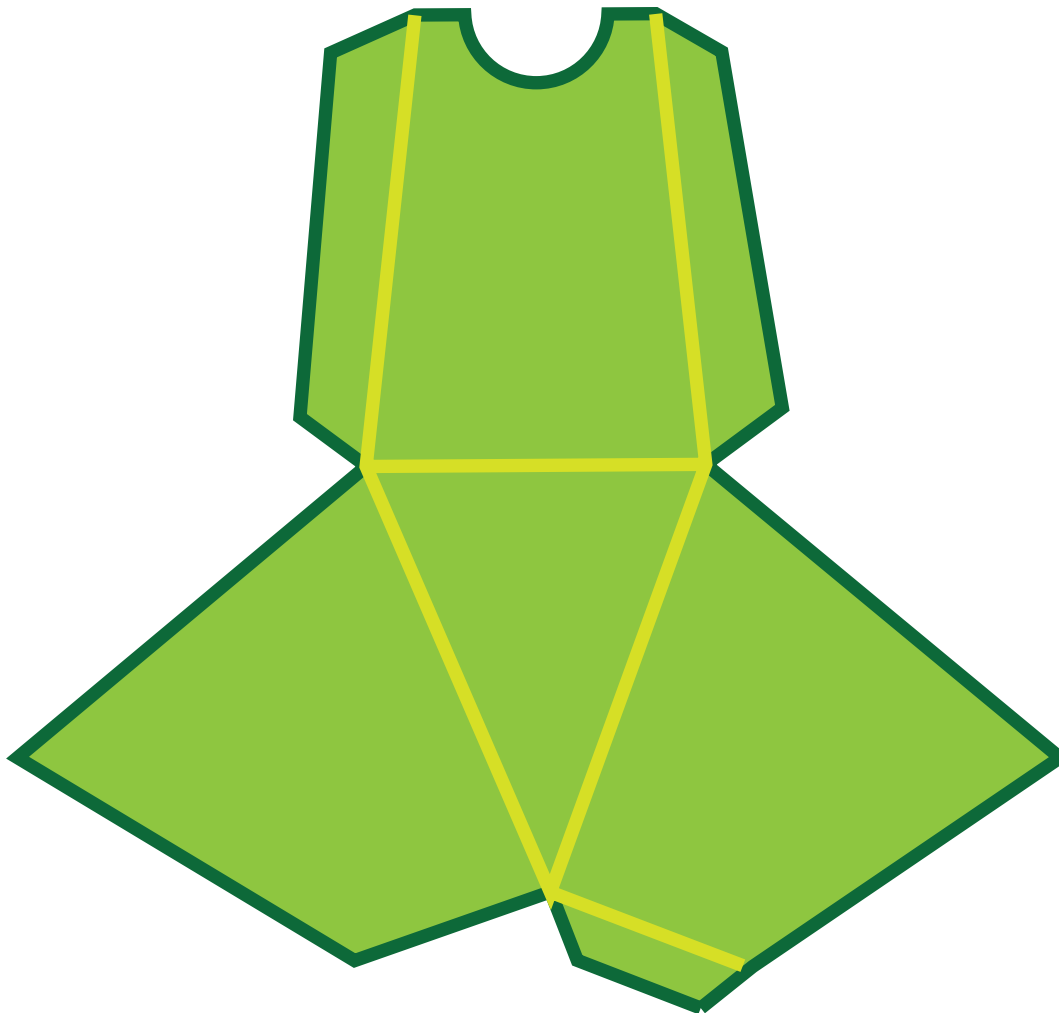


# CHRISTMAS TREE COUNTDOWN CALENDAR

DESIGNED BY **JENNIFER**MAKER

**CUT 8 SMALL BOXES**

**NOTE:** The yellow line is a fold line.

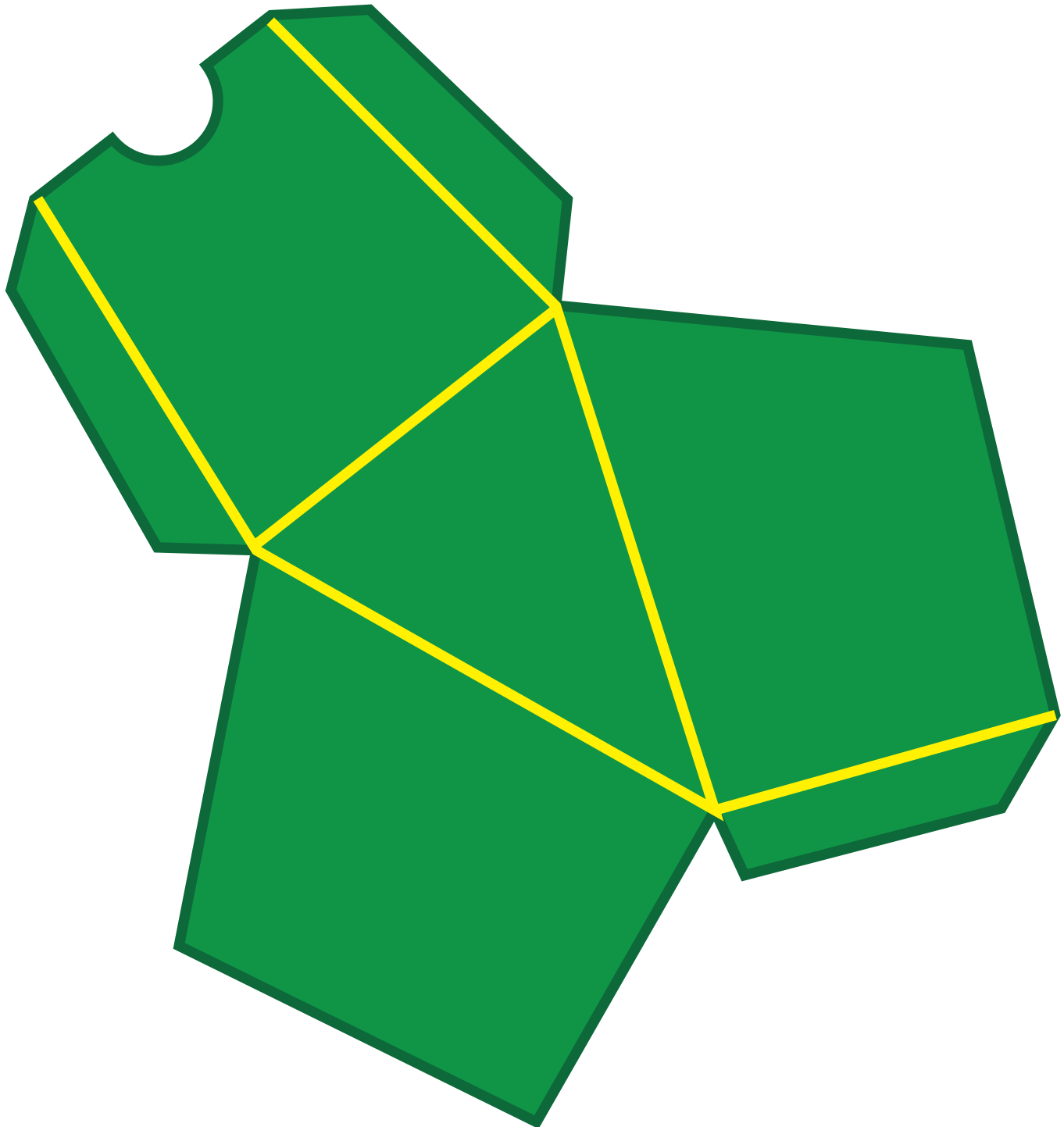


# CHRISTMAS TREE COUNTDOWN CALENDAR

DESIGNED BY **JENNIFER**MAKER

**CUT 8 MEDIUM BOXES**

**NOTE:** The yellow line is a fold line.

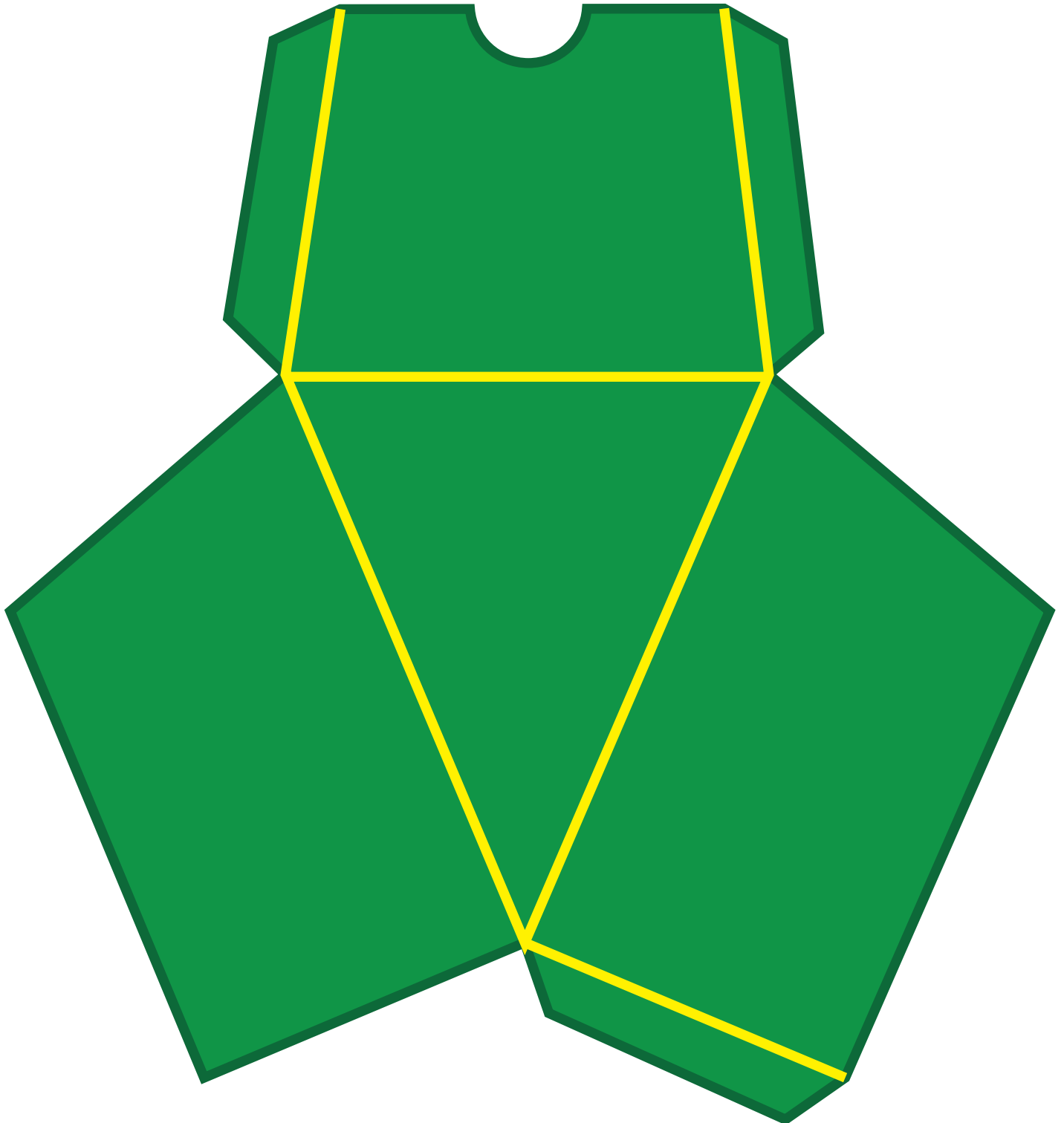


# CHRISTMAS TREE COUNTDOWN CALENDAR

DESIGNED BY **JENNIFER**MAKER

**CUT 8 LARGE BOXES**

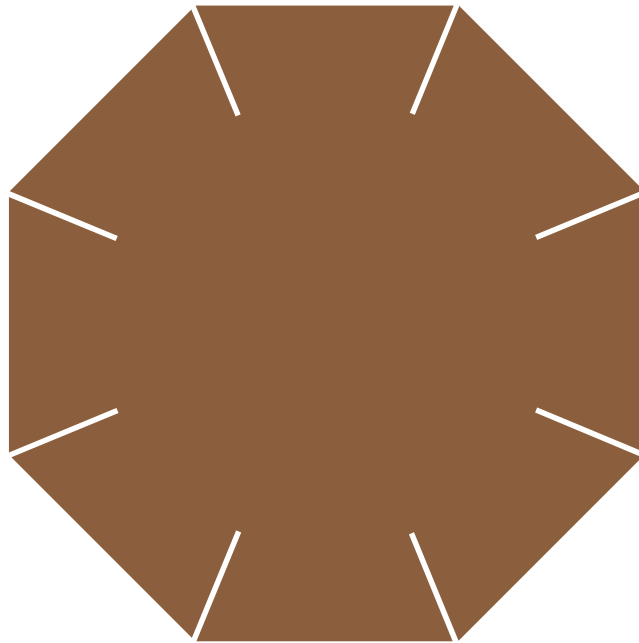
**NOTE:** The yellow line is a fold line.



# CHRISTMAS TREE COUNTDOWN CALENDAR

DESIGNED BY **JENNIFER**MAKER

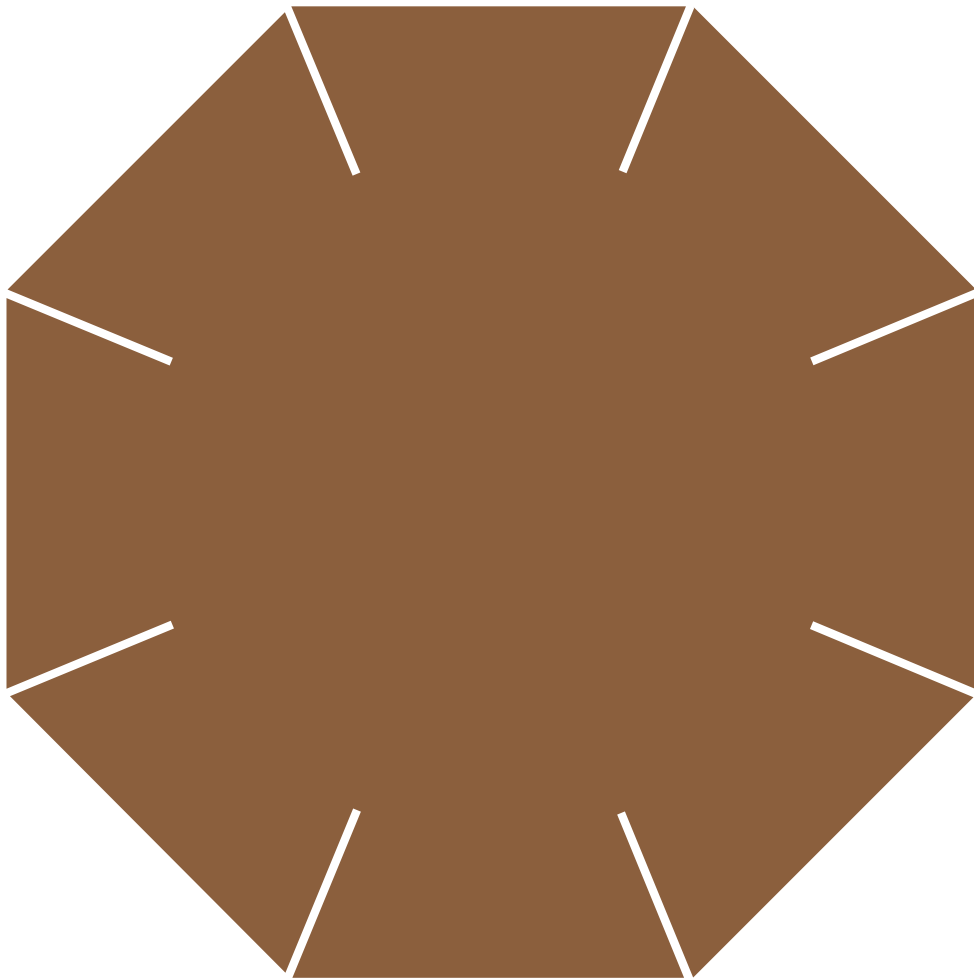
CUT 1 EXTRA SMALL BASE



# CHRISTMAS TREE COUNTDOWN CALENDAR

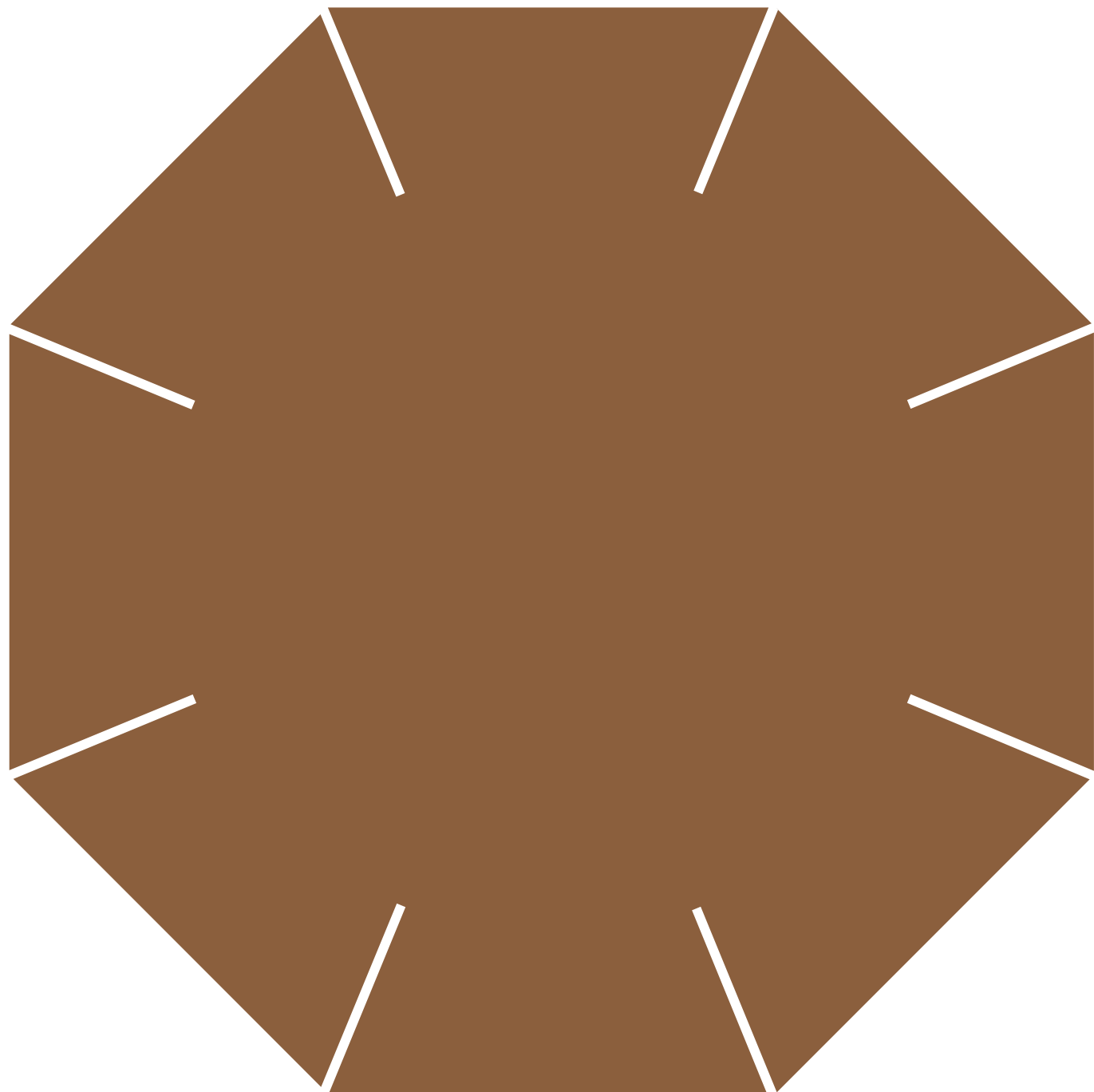
DESIGNED BY **JENNIFER**MAKER

CUT 1 SMALL BASE



**CHRISTMAS TREE COUNTDOWN CALENDAR**  
**DESIGNED BY JENNIFERMAKER**

**CUT 1 MEDIUM BASE**

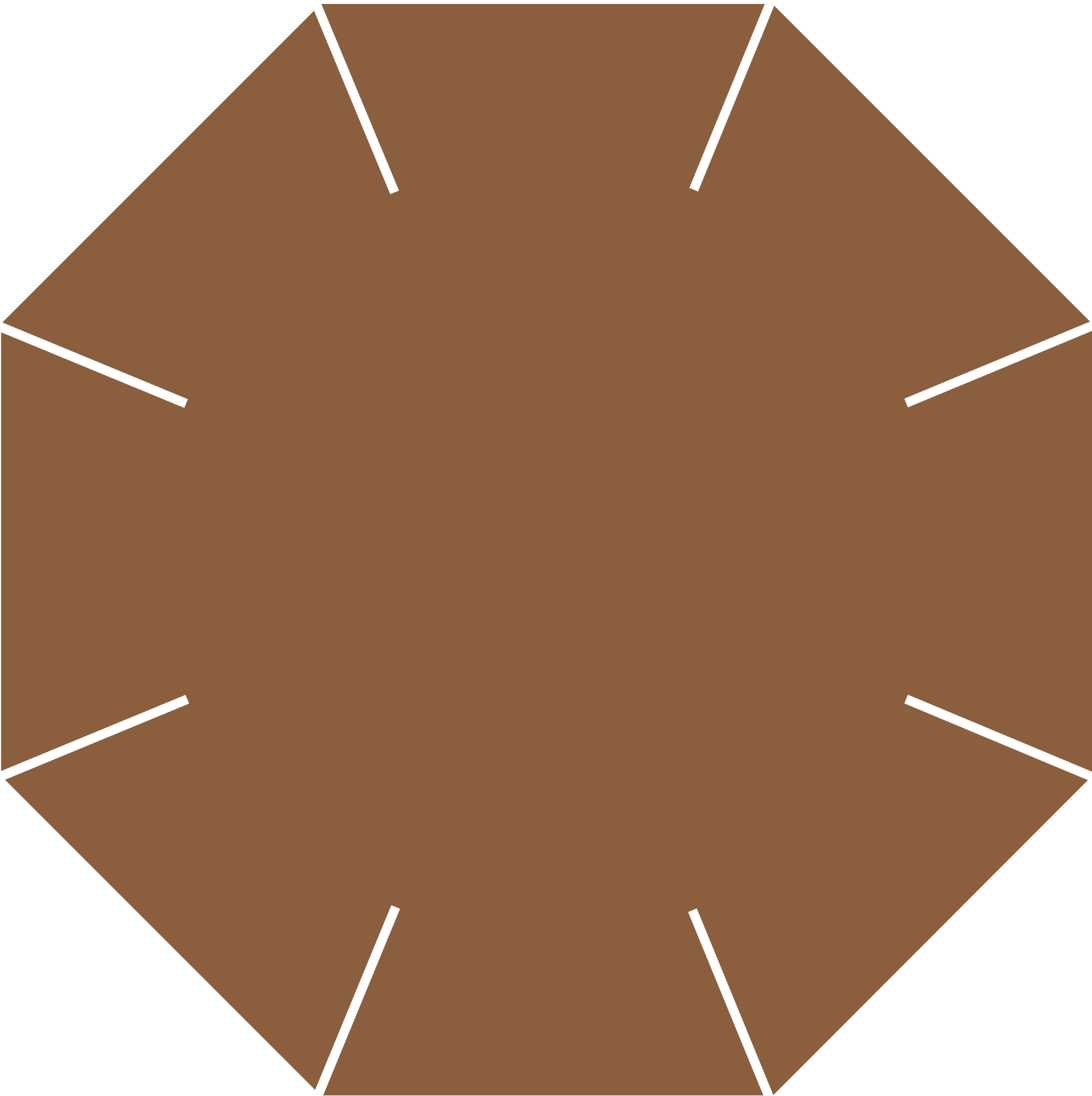


# CHRISTMAS TREE COUNTDOWN CALENDAR

DESIGNED BY **JENNIFER**MAKER

**CUT 1 LARGE BASE**

**NOTE:** This base is the full width of the sheet of paper, in the event your printer cuts off the edges.



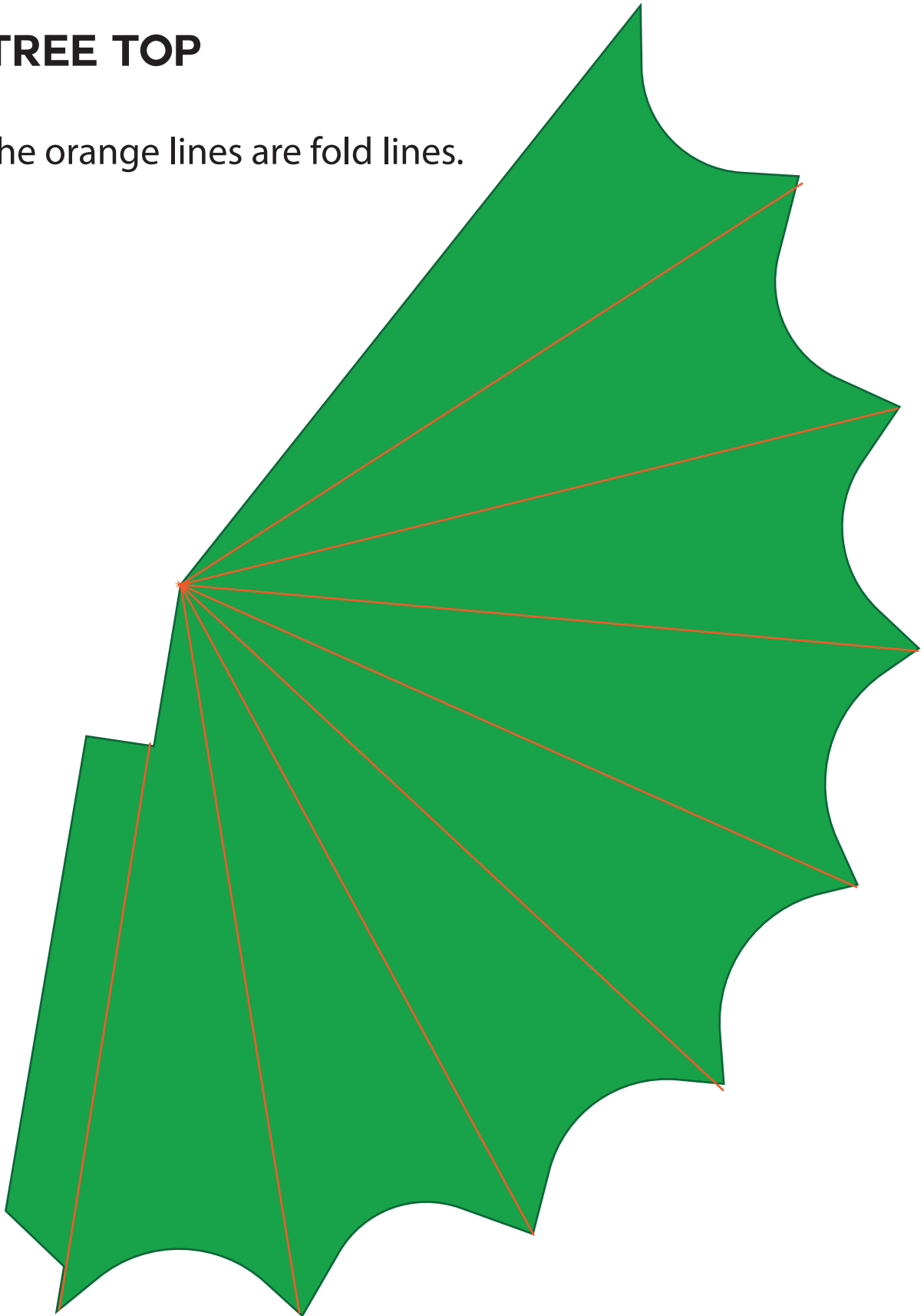


# CHRISTMAS TREE COUNTDOWN CALENDAR

DESIGNED BY **JENNIFER**MAKER

## CUT 1 TREE TOP

**NOTE:** The orange lines are fold lines.



# CHRISTMAS TREE COUNTDOWN CALENDAR

DESIGNED BY **JENNIFER**MAKER

CUT EACH OF THESE DAYS MARKERS

