

JENNIFERMAKER
SCARF FACE MASK
PATTERN

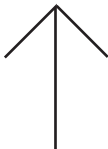
TOP SCARF

CUT 1 FROM COTTON KNIT OR LYOCELL FABRIC
3/8" SEAM ALLOWANCE

JENNIFERMAKER
SCARF FACE MASK
PATTERN

FILTER POCKET

CUT 1 FROM COTTON OR LYOCELL FABRIC



FABRIC PATTERN
DIRECTION

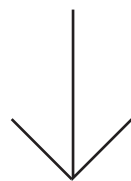
A1 A2

B1 B2

F2

**TEST
SQUARE**
ENSURE THIS
SQUARE
MEASURES
1 INCH BY 1 INCH
WHEN PRINTED

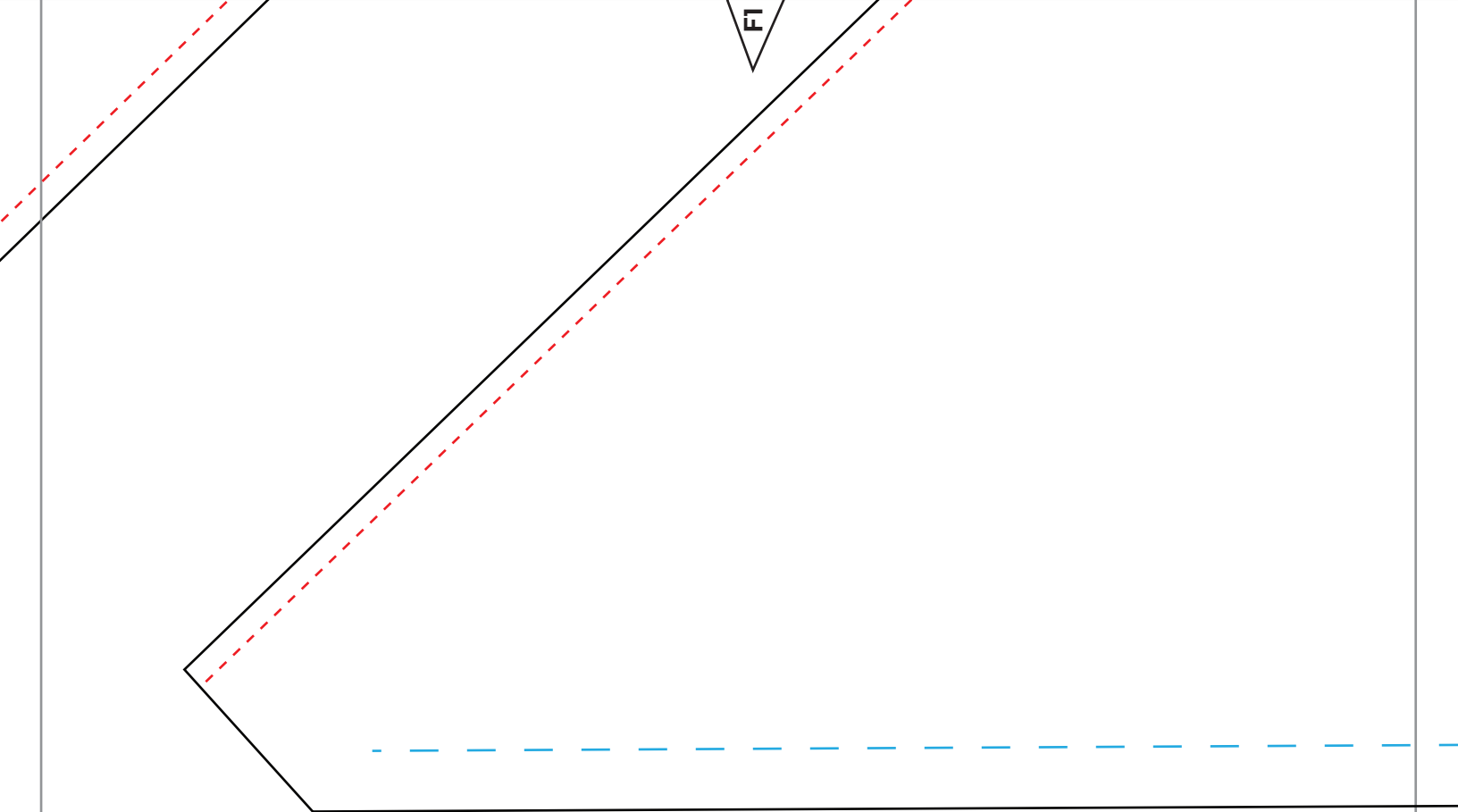
FABRIC PATTERN
DIRECTION



G2

FABRIC PATTERN
DIRECTION

**TEST
SQUARE**
ENSURE THIS
SQUARE
MEASURES
1 INCH BY 1 INCH
WHEN PRINTED



C1 C2

D1 D2

EAR LOOP
CUT 2 FROM COTTON KNIT OR LYOCELL FABRIC

JENNIFERMAKER

SCARF FACE MASK

PATTERN

BOTTOM SCARF

CUT 2 FROM COTTON KNIT OR LYOCELL FABRIC
3/8" SEAM ALLOWANCE

