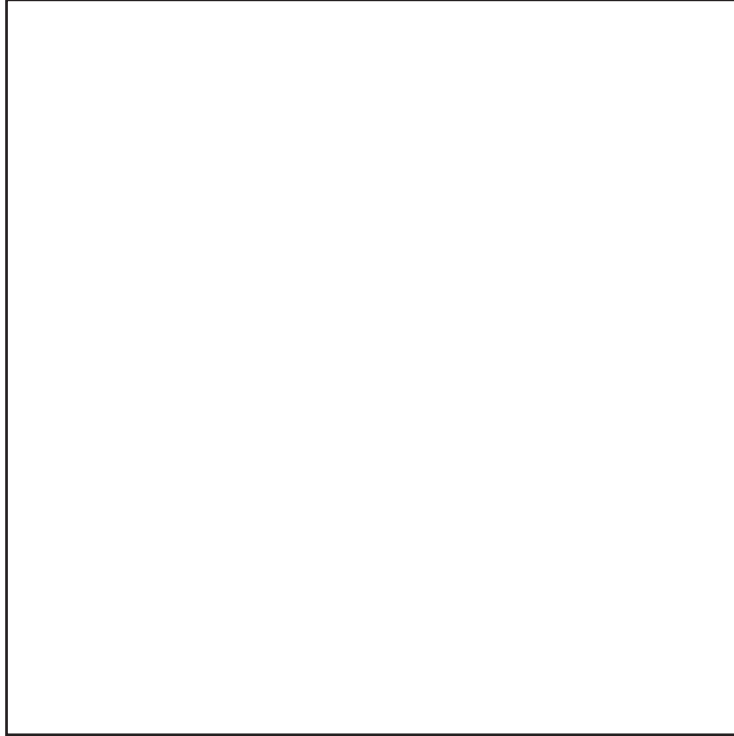


EXPLODING BUTTERFLY BOX

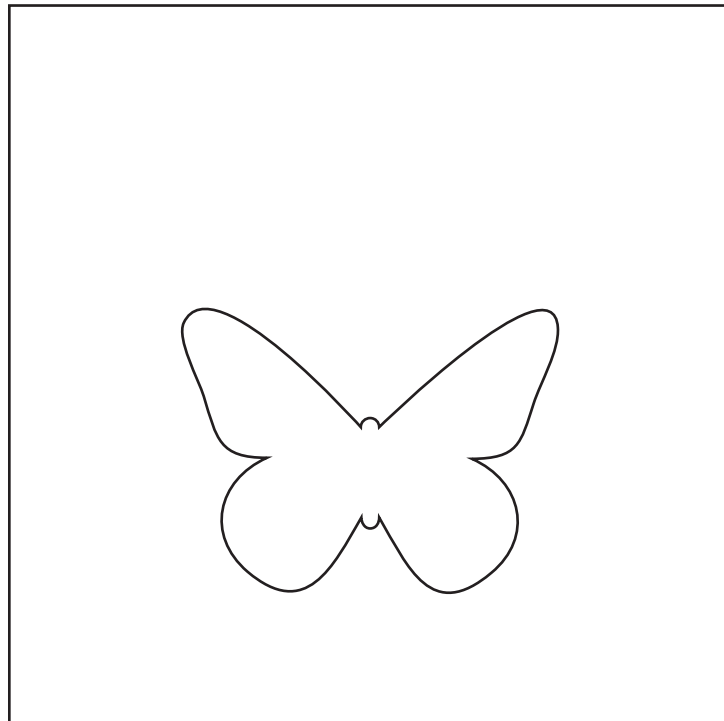
BY JENNIFERMAKER

BOX 1

BASE - CUT 1



OUTSIDE DECORATIVE PIECE - CUT 4



EXPLODING BUTTERFLY BOX

BY JENNIFERMAKER

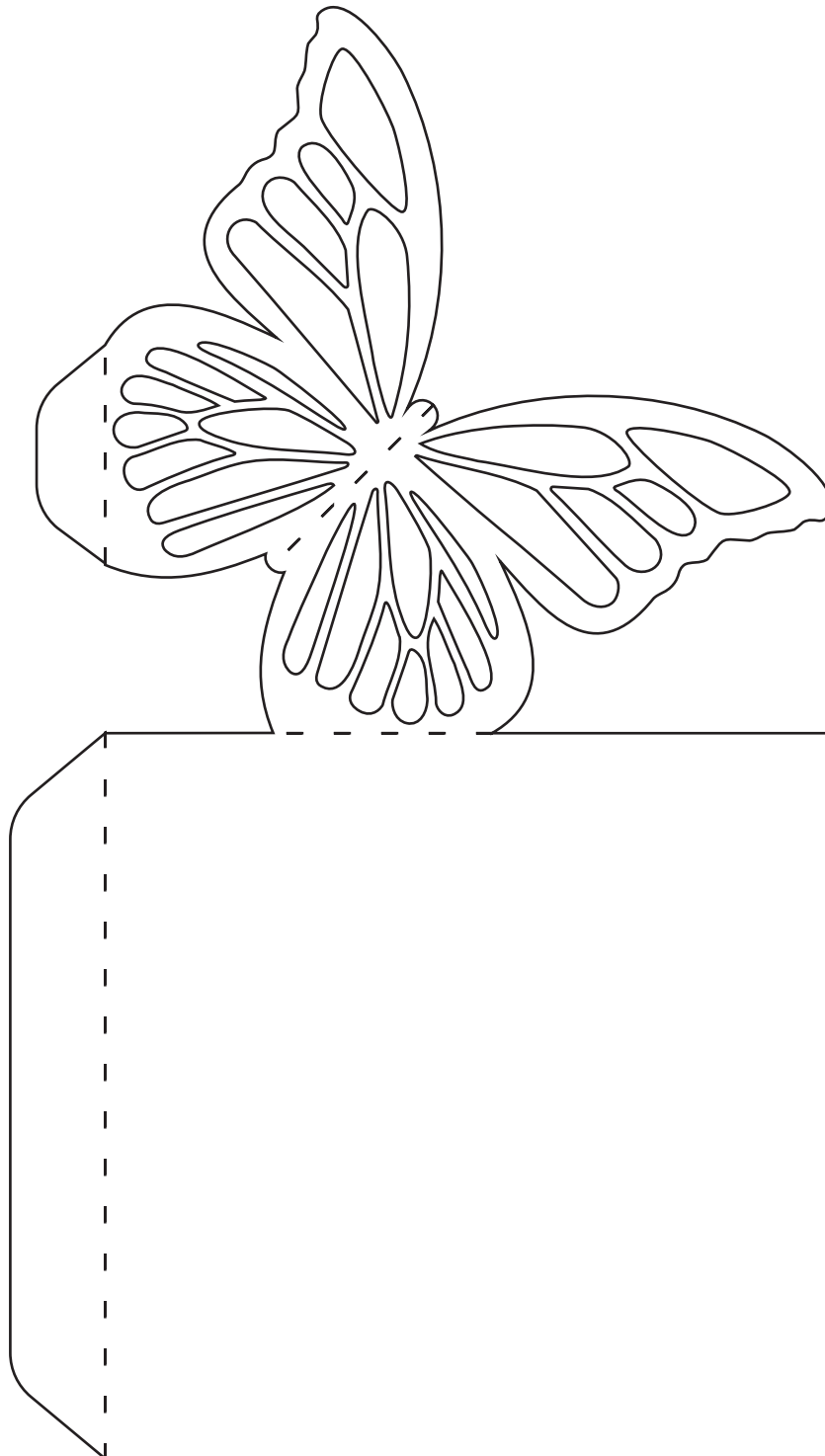
BOX 1 - SIDES

CUT 4

SCORE/FOLD ALONG DASHED LINES

ATTACH TO BASE WITH LARGE TAB

ATTACH BUTTERFLY TO ADJACENT SIDE WITH SMALL TAB



EXPLODING BUTTERFLY BOX

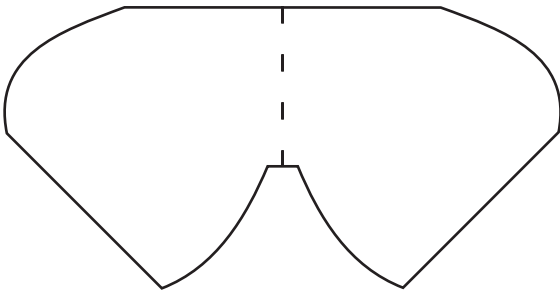
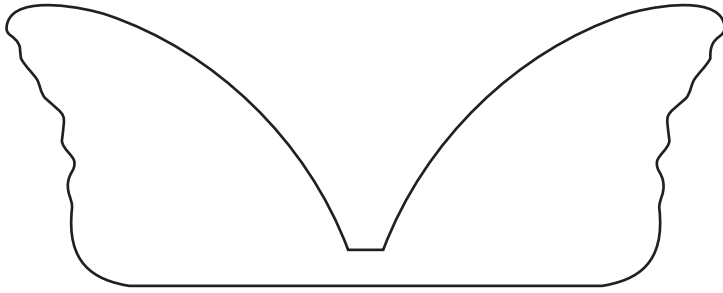
BY JENNIFERMAKER

BOX 1 - EXTRAS

CORNER BUTTERFLY WINGS

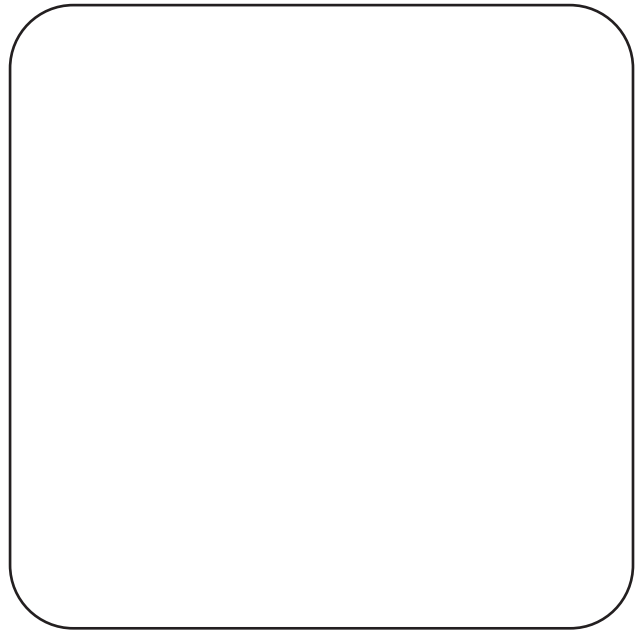
CUT 4 EACH

SCORE/FOLD ALONG DASHED LINES



INSIDE DECORATIVE PIECE

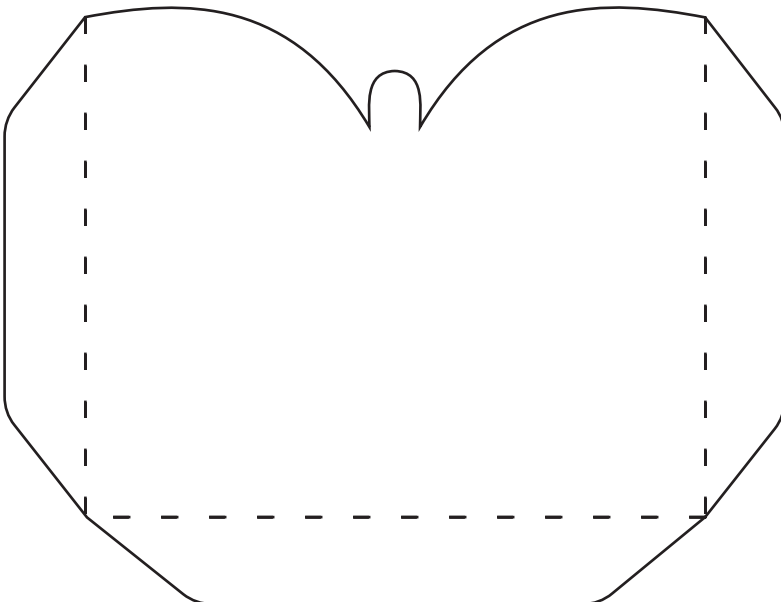
CUT 2



INSIDE NOTECARD POCKET

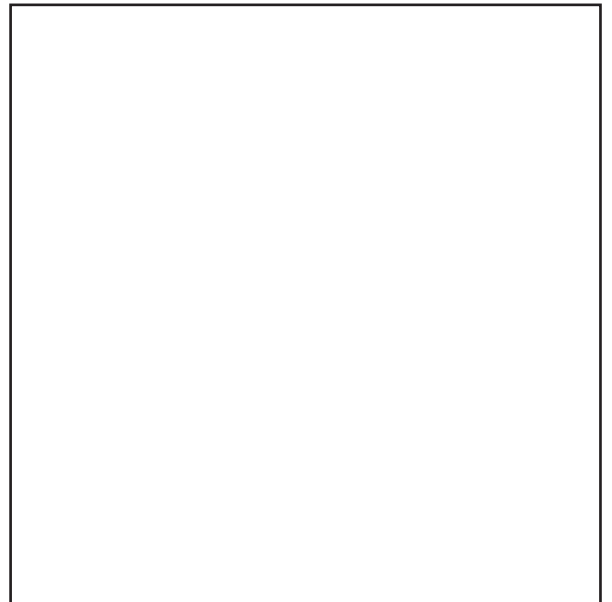
CUT 2

SCORE/FOLD ALONG DASHED LINES
ATTACH TO OPPOSITE SIDES WITH TABS



NOTECARD

CUT 2



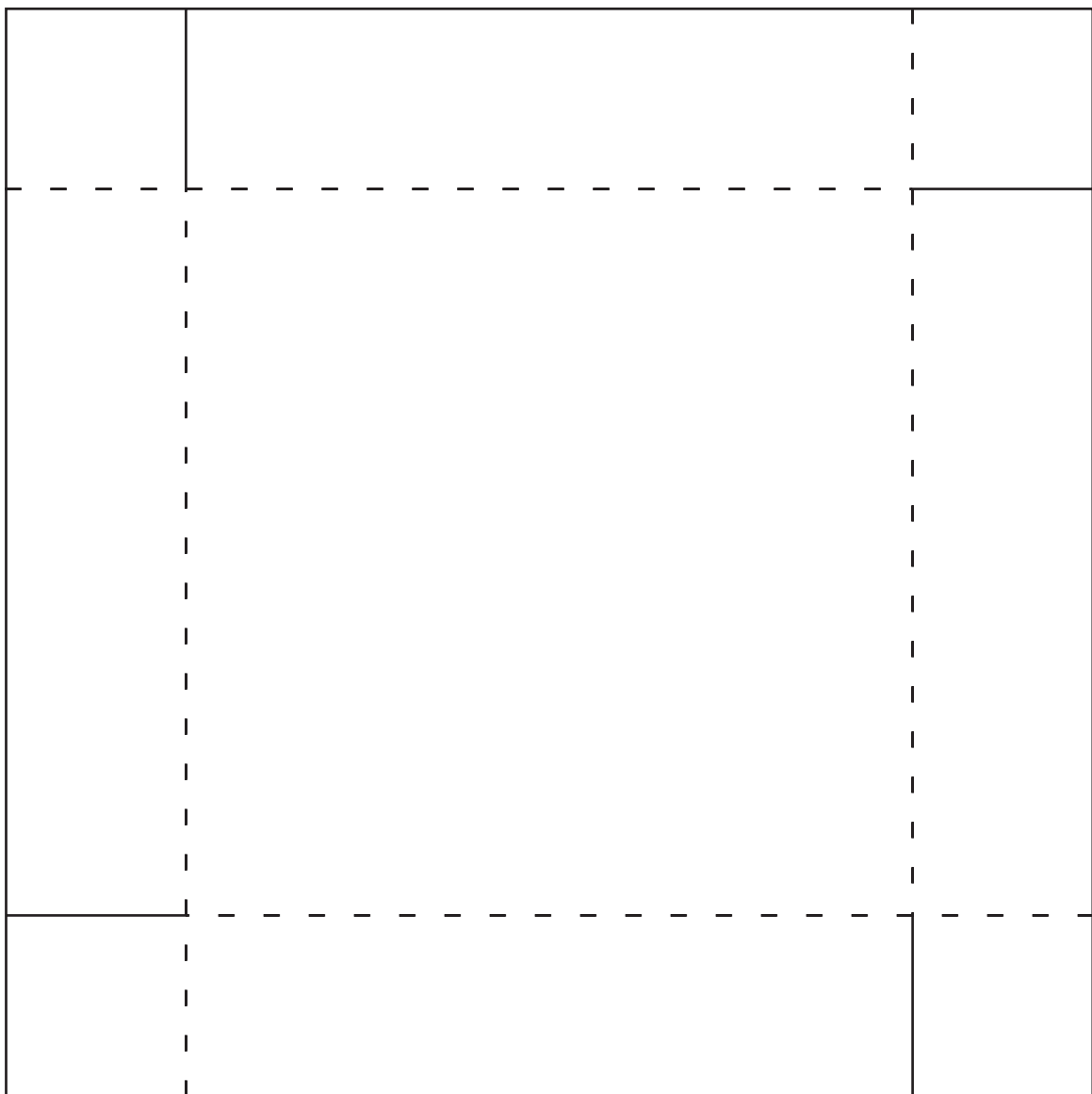
EXPLODING BUTTERFLY BOX

BY JENNIFERMAKER

LID 1 - BASE

CUT 1

SCORE/FOLD ALONG DASHED LINES
ATTACH SIDES TOGETHER WITH TABS

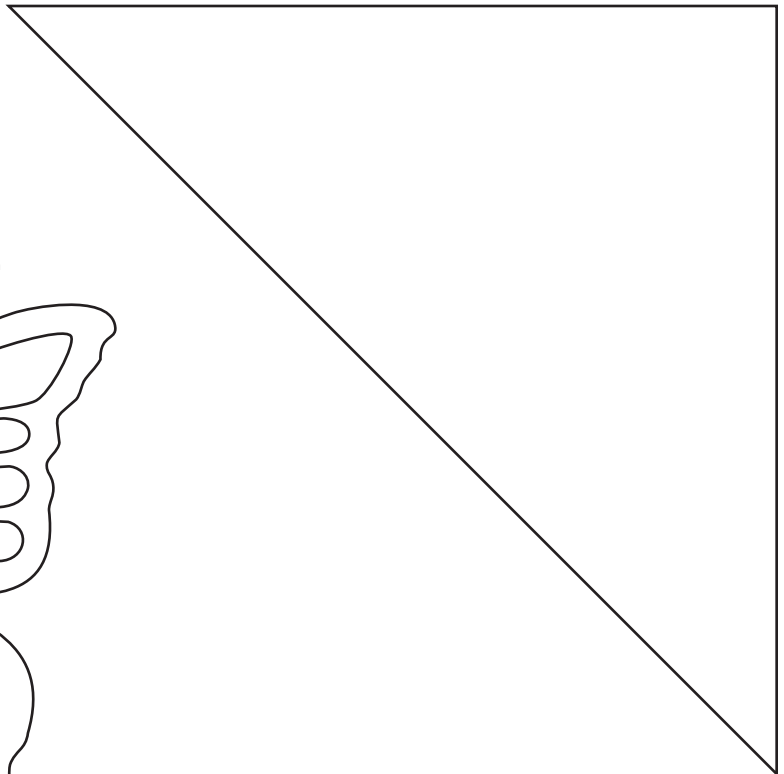


EXPLODING BUTTERFLY BOX

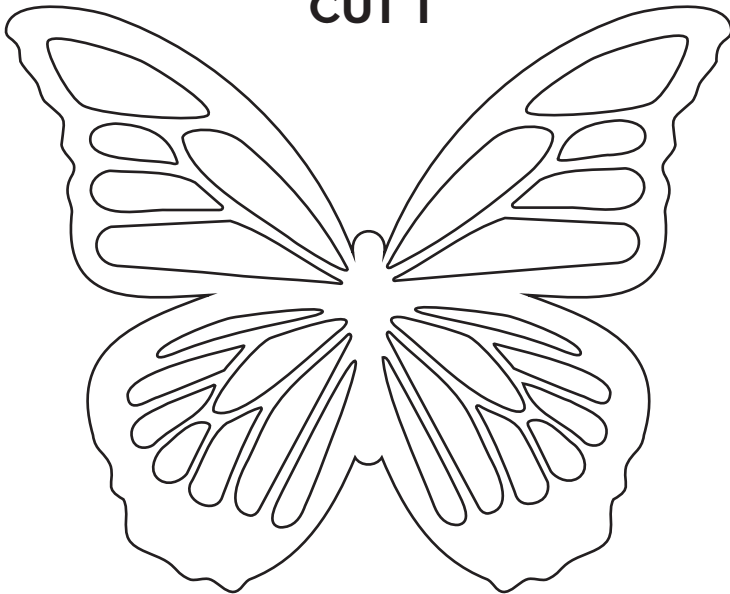
BY JENNIFERMAKER

LID 1 - EXTRAS

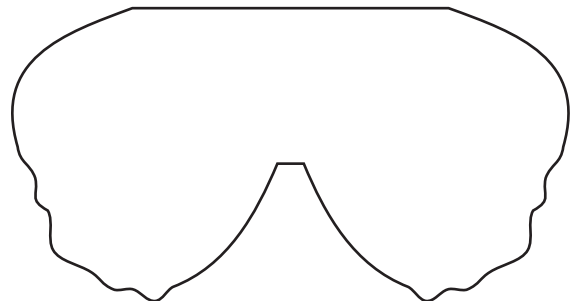
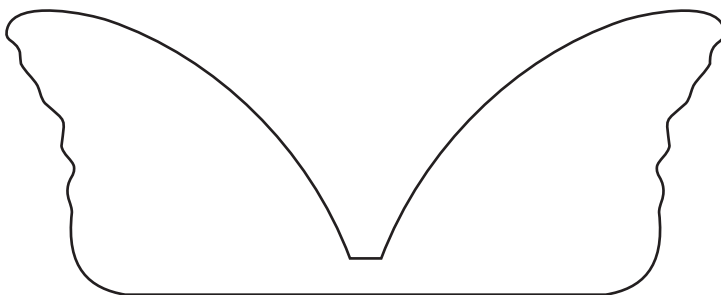
TOP DECORATIVE PIECE
CUT 2



TOP BUTTERFLY PIECE
CUT 1



TOP BUTTERFLY WINGS
CUT 1 EACH

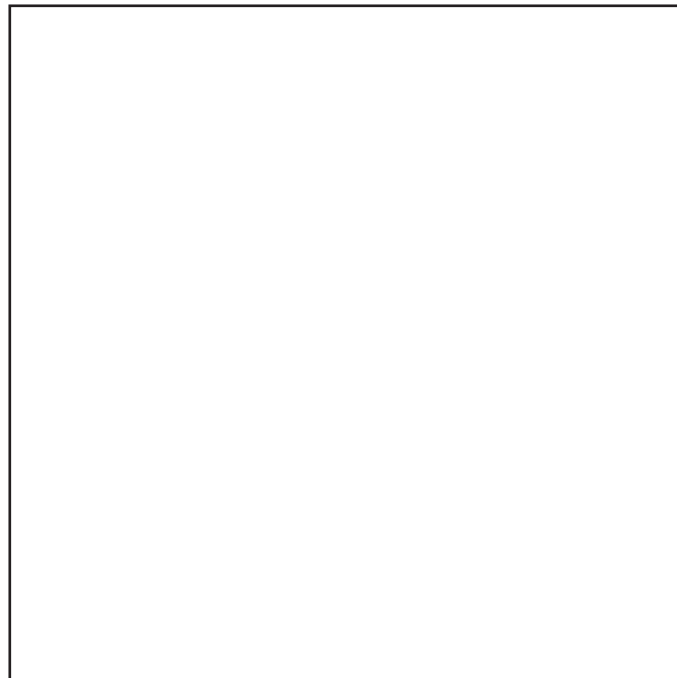


EXPLODING BUTTERFLY BOX

BY JENNIFERMAKER

BOX 2 - BASE

CUT 1



EXPLODING BUTTERFLY BOX

BY JENNIFERMAKER

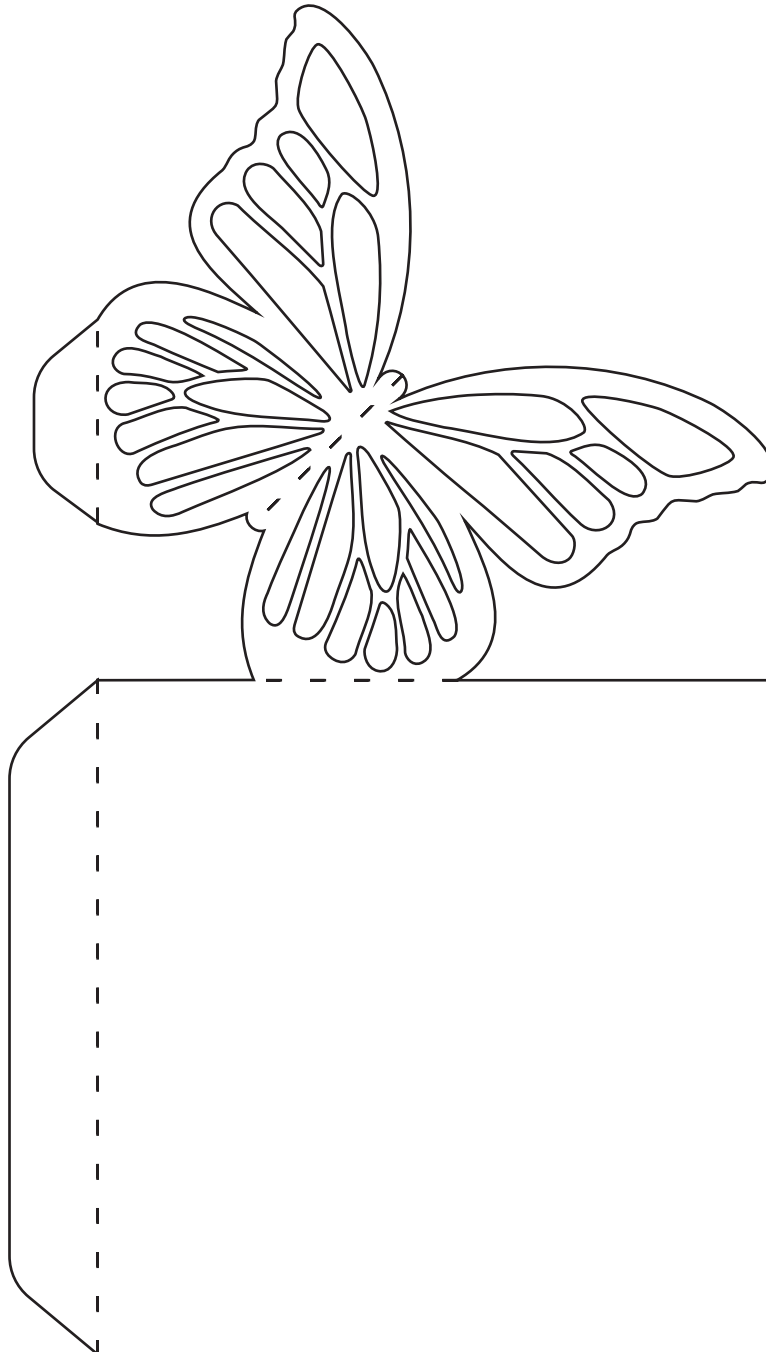
BOX 2 - SIDES

CUT 4

SCORE/FOLD ALONG DASHED LINES

ATTACH TO BASE WITH LARGE TAB

ATTACH BUTTERFLY TO ADJACENT SIDE WITH SMALL TAB

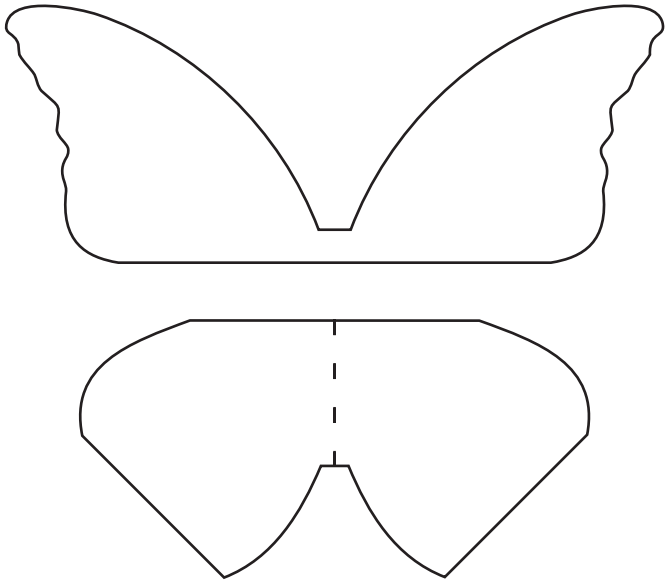


EXPLODING BUTTERFLY BOX

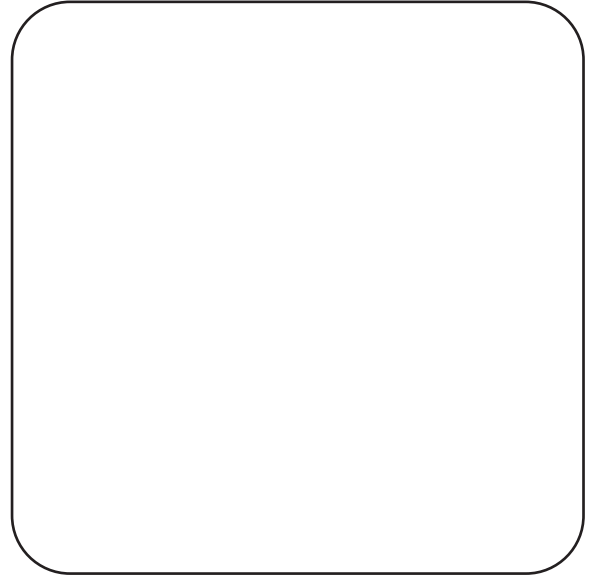
BY JENNIFERMAKER

BOX 2 - EXTRAS

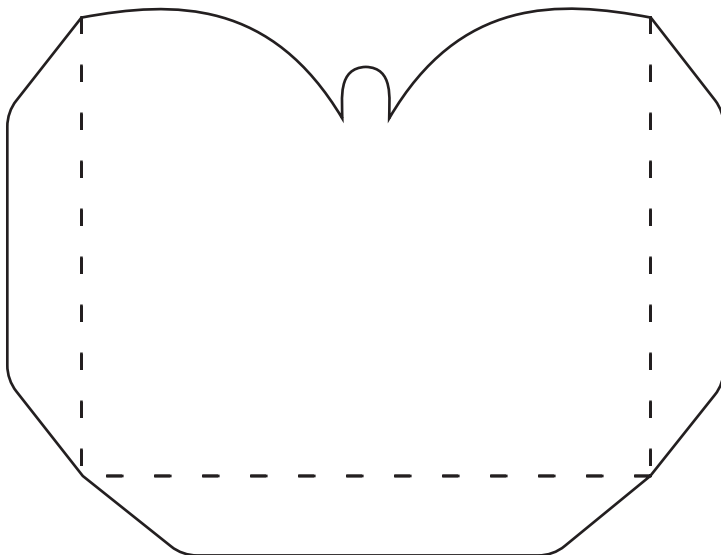
CORNER BUTTERFLY WINGS
CUT 4 EACH
SCORE/FOLD ALONG DASHED LINES



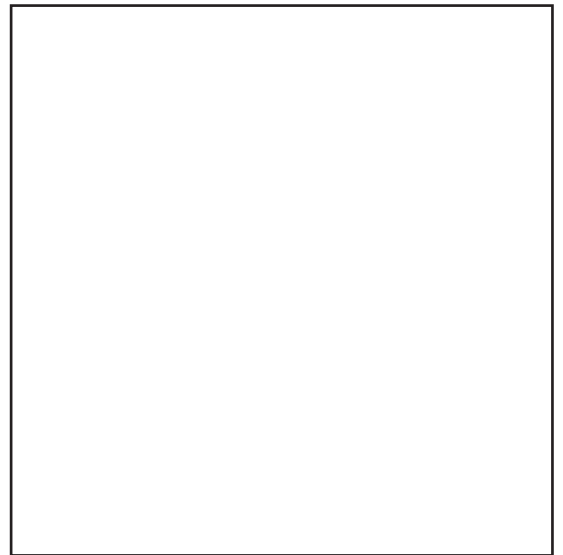
INSIDE DECORATIVE PIECE
CUT 2



INSIDE NOTECARD POCKET
CUT 2
SCORE/FOLD ALONG DASHED LINES
ATTACH TO OPPOSITE SIDES WITH TABS



NOTECARD
CUT 2



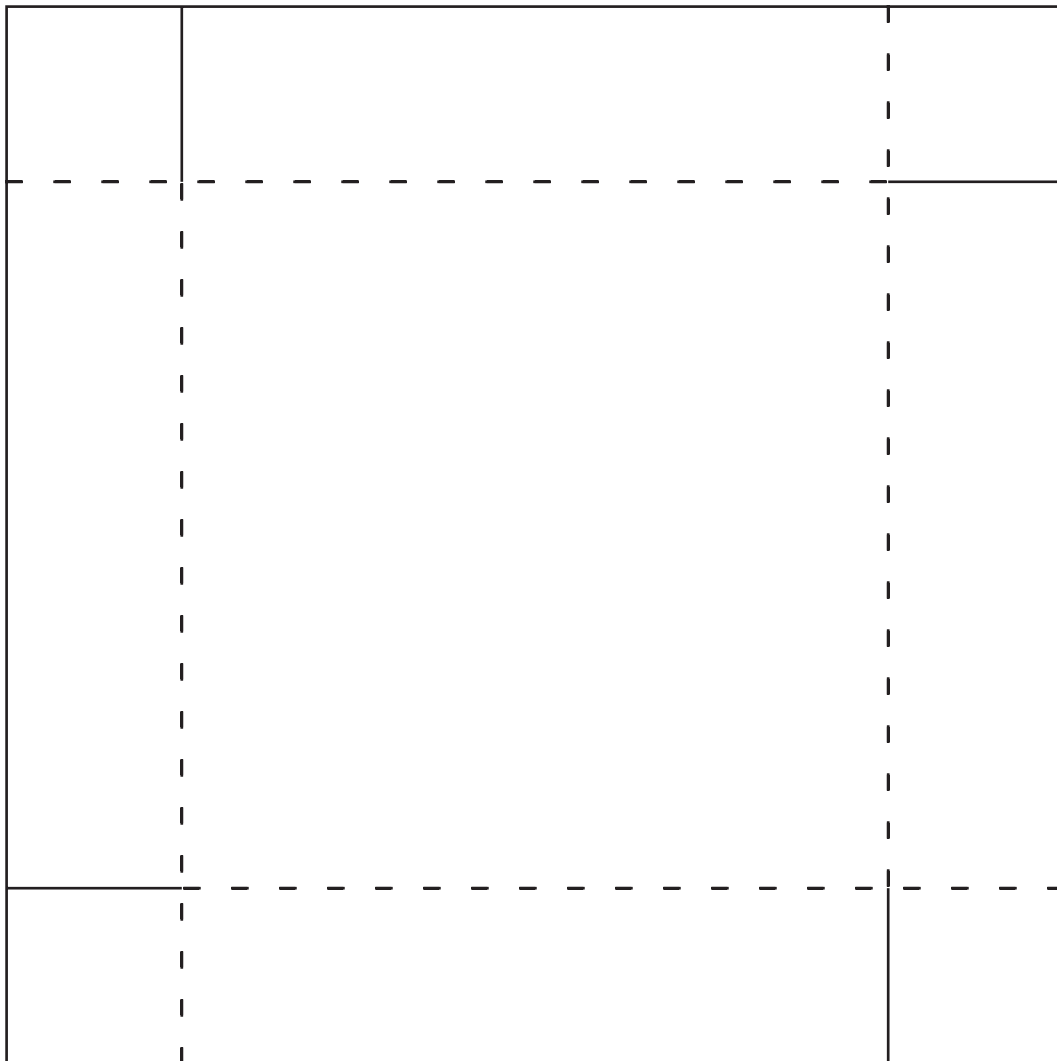
EXPLODING BUTTERFLY BOX

BY JENNIFERMAKER

LID 2

CUT 1

SCORE/FOLD ALONG DASHED LINES
ATTACH SIDES TOGETHER WITH TABS

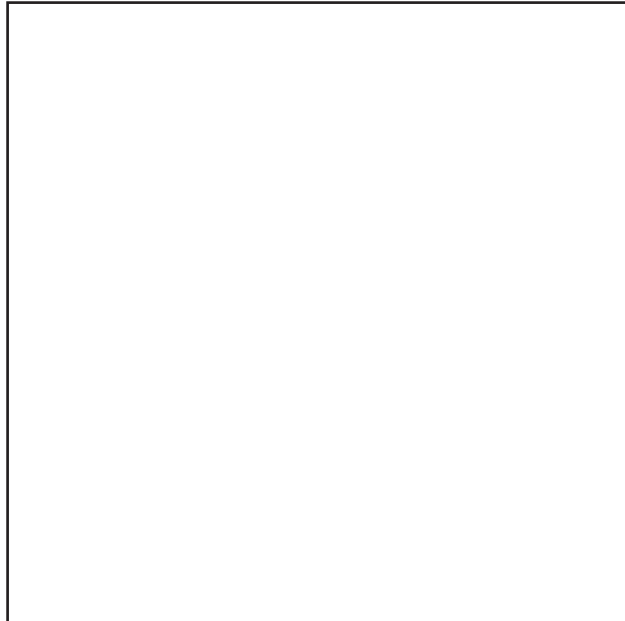


EXPLODING BUTTERFLY BOX

BY JENNIFERMAKER

BOX 3 - BASE

CUT 1



EXPLODING BUTTERFLY BOX

BY JENNIFERMAKER

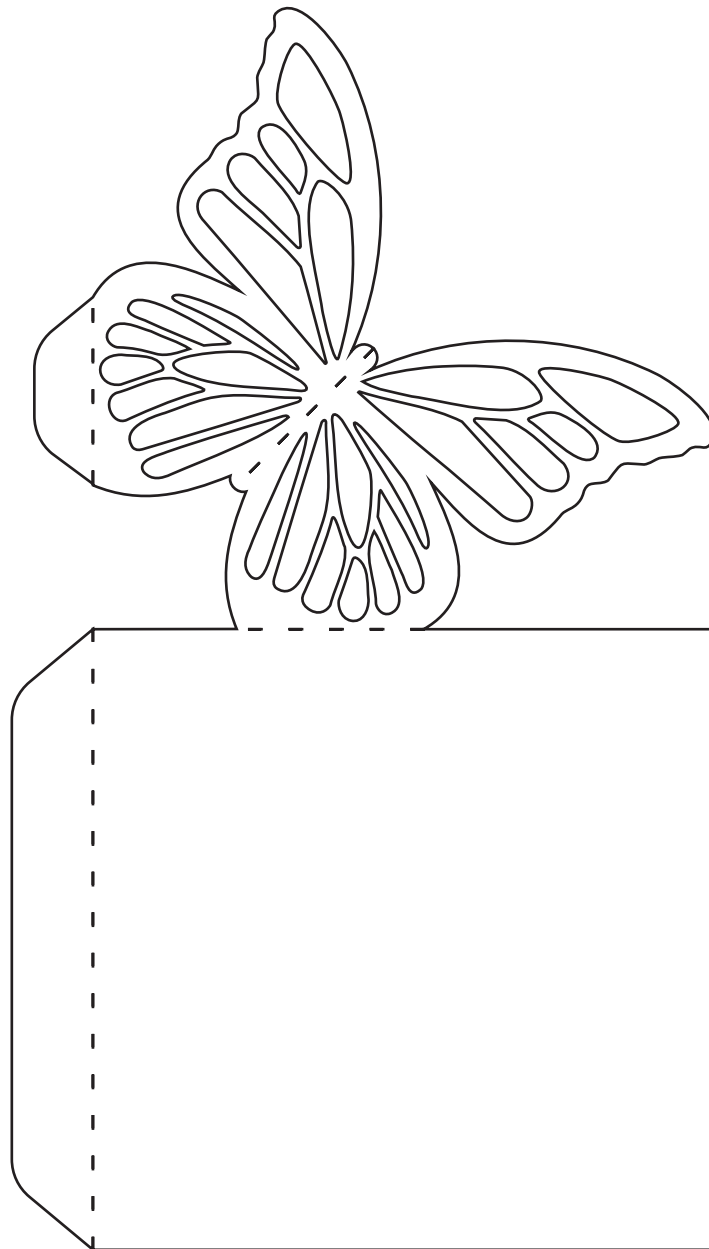
BOX 3 - SIDES

CUT 4

SCORE/FOLD ALONG DASHED LINES

ATTACH TO BASE WITH LARGE TAB

ATTACH BUTTERFLY TO ADJACENT SIDE WITH SMALL TAB

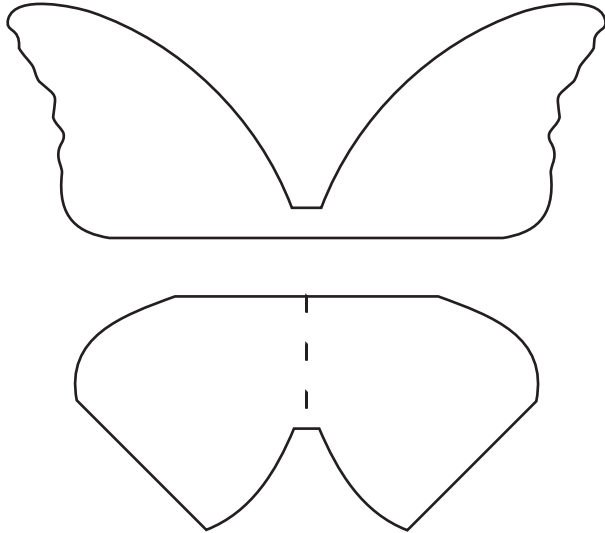


EXPLODING BUTTERFLY BOX

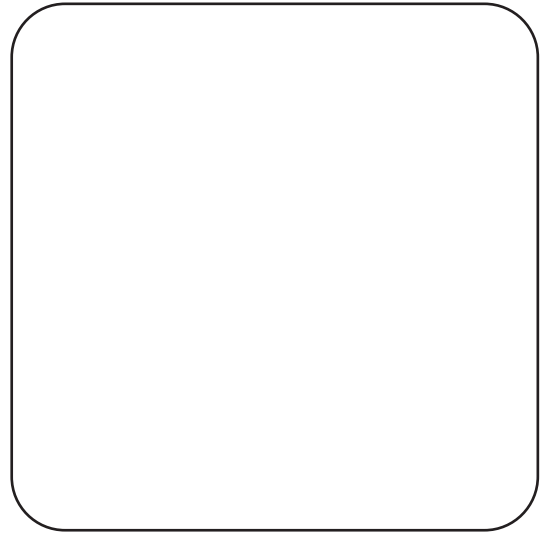
BY JENNIFERMAKER

BOX 3 - EXTRAS

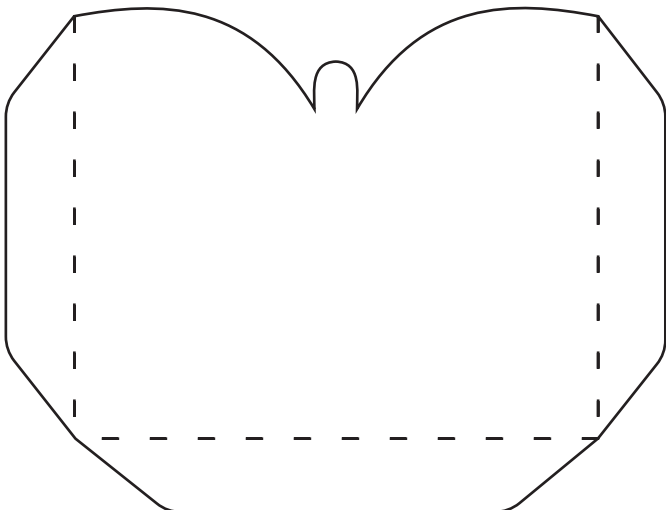
CORNER BUTTERFLY WINGS
CUT 4 EACH
SCORE/FOLD ALONG DASHED LINES



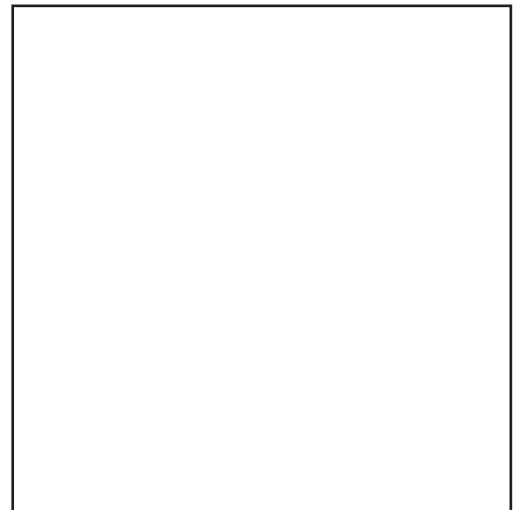
INSIDE DECORATIVE PIECE
CUT 2



INSIDE NOTECARD POCKET
CUT 2
SCORE/FOLD ALONG DASHED LINES
ATTACH TO OPPOSITE SIDES WITH TABS



NOTECARD
CUT 2



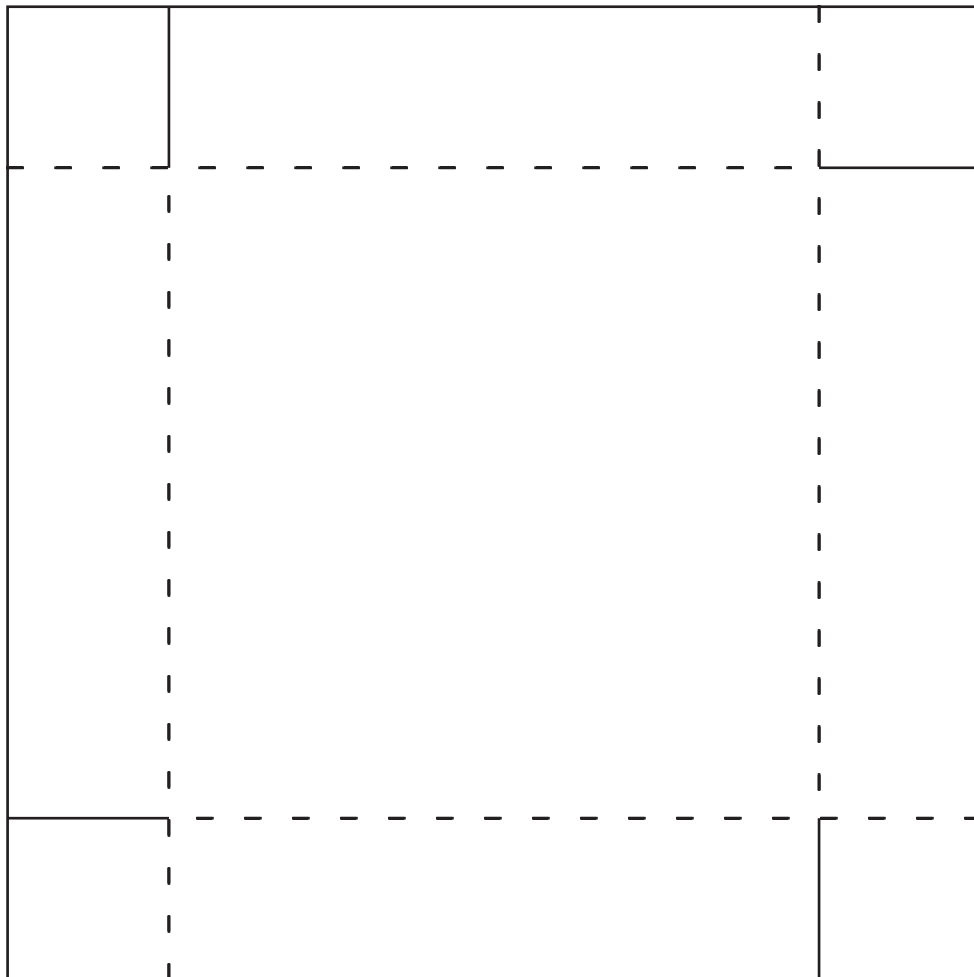
EXPLODING BUTTERFLY BOX

BY JENNIFERMAKER

LID 3

CUT 1

SCORE/FOLD ALONG DASHED LINES
ATTACH SIDES TOGETHER WITH TABS

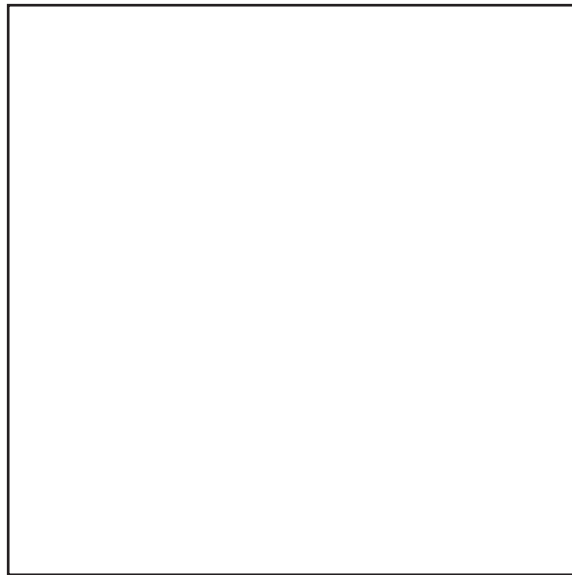


EXPLODING BUTTERFLY BOX

BY JENNIFERMAKER

BOX 4 - BASE

CUT 1



EXPLODING BUTTERFLY BOX

BY JENNIFERMAKER

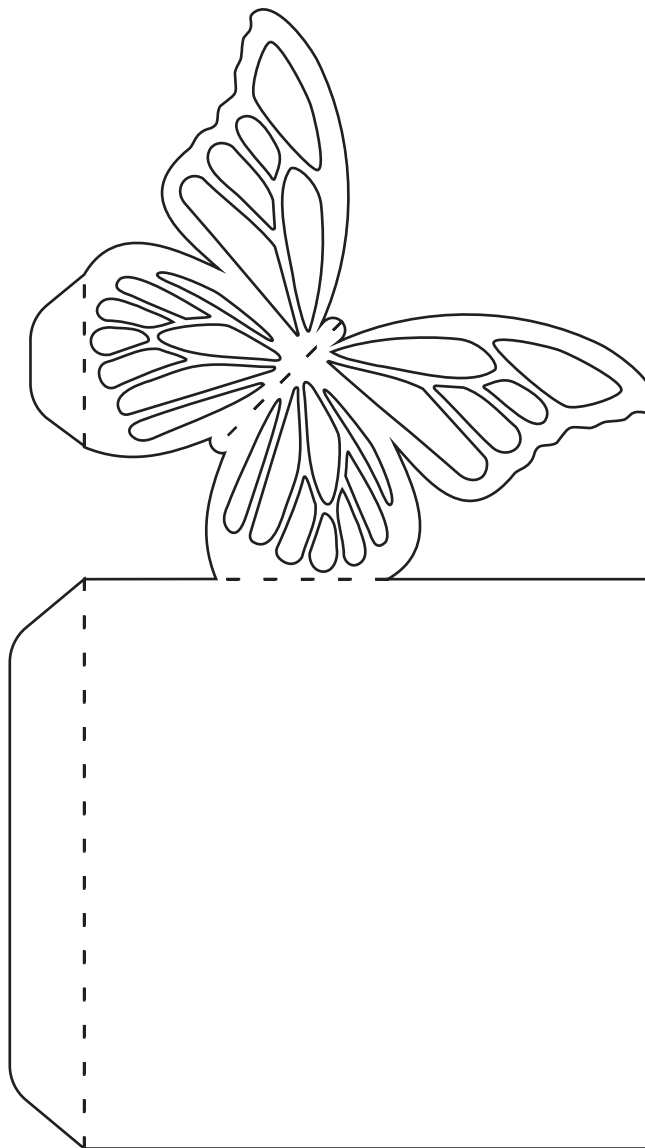
BOX 4 - SIDES

CUT 4

SCORE/FOLD ALONG DASHED LINES

ATTACH TO BASE WITH LARGE TAB

ATTACH BUTTERFLY TO ADJACENT SIDE WITH SMALL TAB

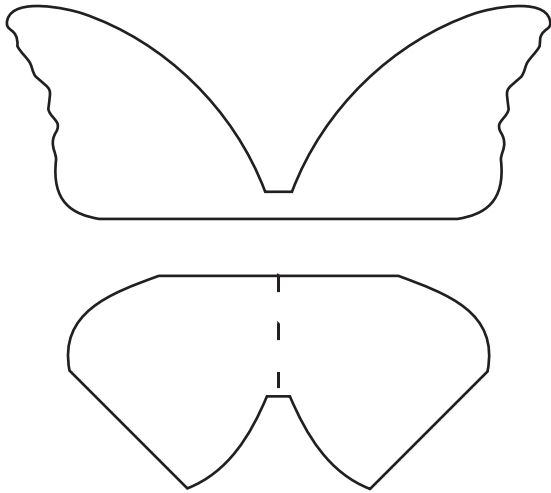


EXPLODING BUTTERFLY BOX

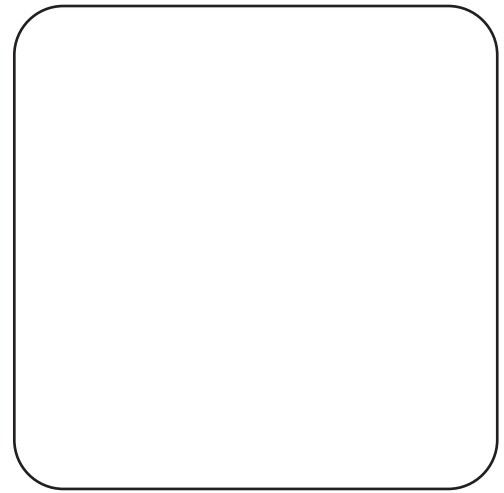
BY JENNIFERMAKER

BOX 4 - EXTRAS

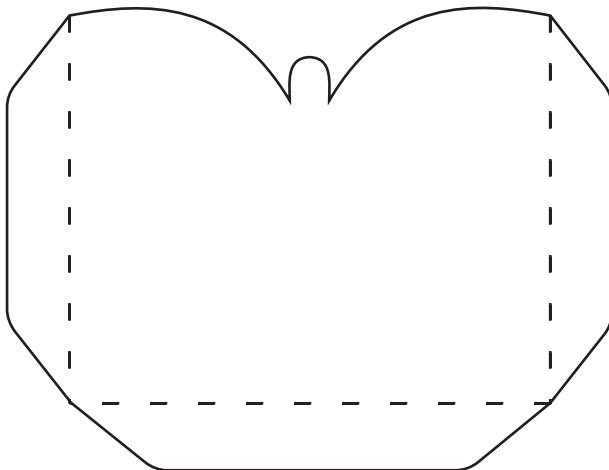
CORNER BUTTERFLY WINGS
CUT 4 EACH
SCORE/FOLD ALONG DASHED LINES



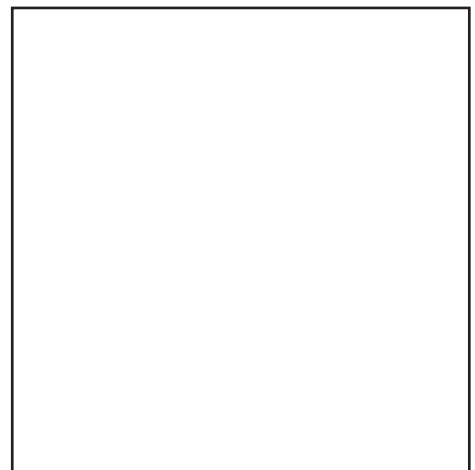
INSIDE DECORATIVE PIECE
CUT 2



INSIDE NOTECARD POCKET
CUT 2
SCORE/FOLD ALONG DASHED LINES
ATTACH TO OPPOSITE SIDES WITH TABS



NOTECARD
CUT 2



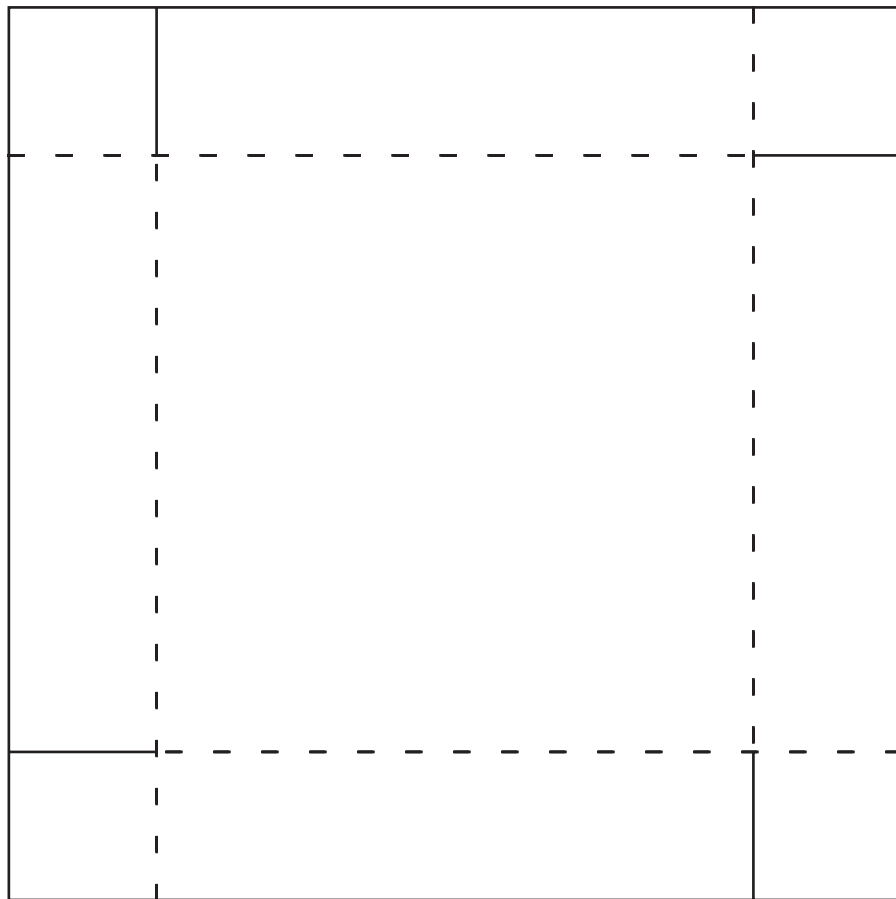
EXPLODING BUTTERFLY BOX

BY JENNIFERMAKER

LID 4

CUT 1

SCORE/FOLD ALONG DASHED LINES
ATTACH SIDES TOGETHER WITH TABS



EXPLODING BUTTERFLY BOX

BY JENNIFERMAKER

MAGIC BUTTERFLY WINGS

CUT 4 EACH

SCORE/FOLD ALONG DASHED LINES
GLUE TOP WINGS AROUND WIRE
GLUE BOTTOM WINGS TO POPSICLE STICK

