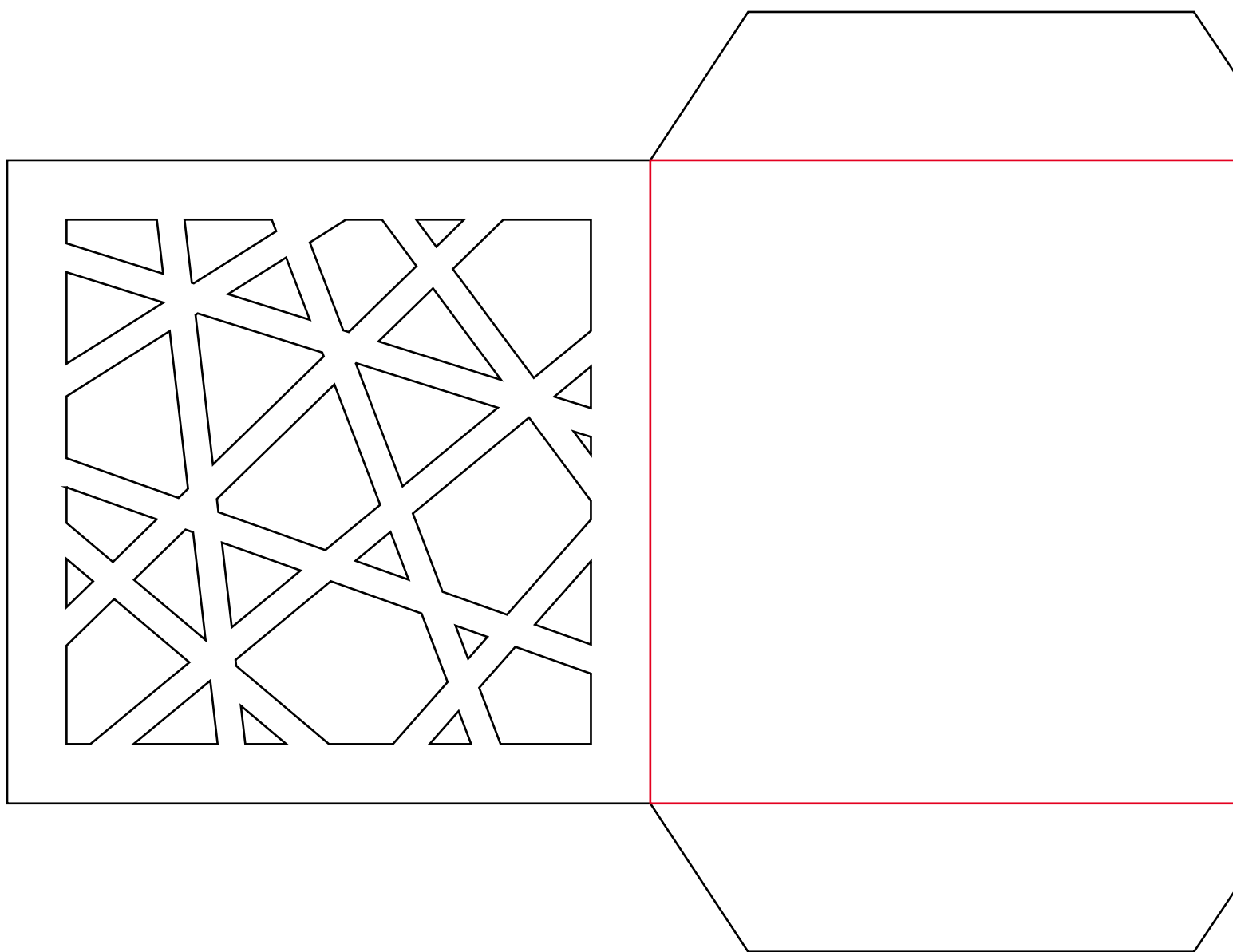


# HOW TO MAKE ENVELOPES

BY JENNIFERMAKER

4.25" x 4.25" "LINES" ENVELOPE  
PART 1  
CUT 1



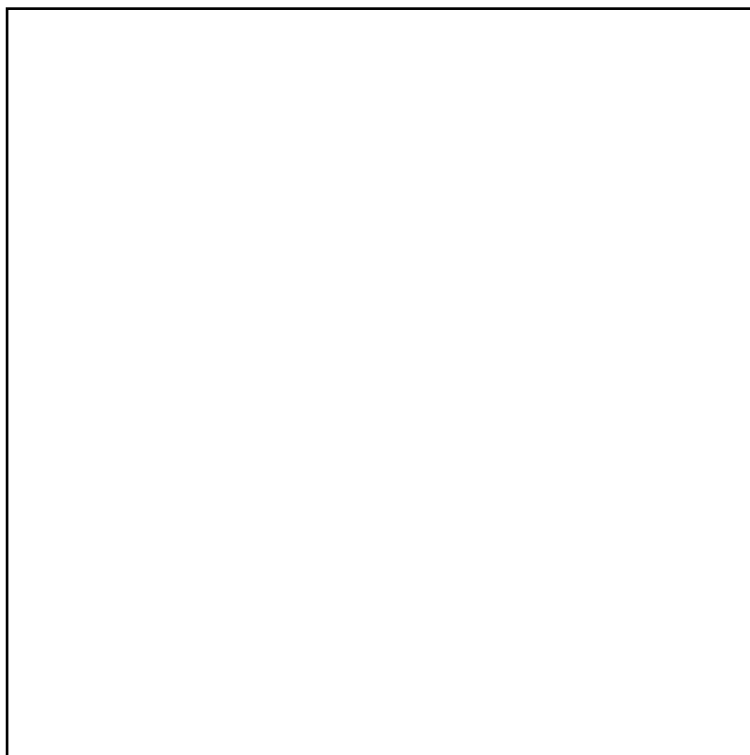
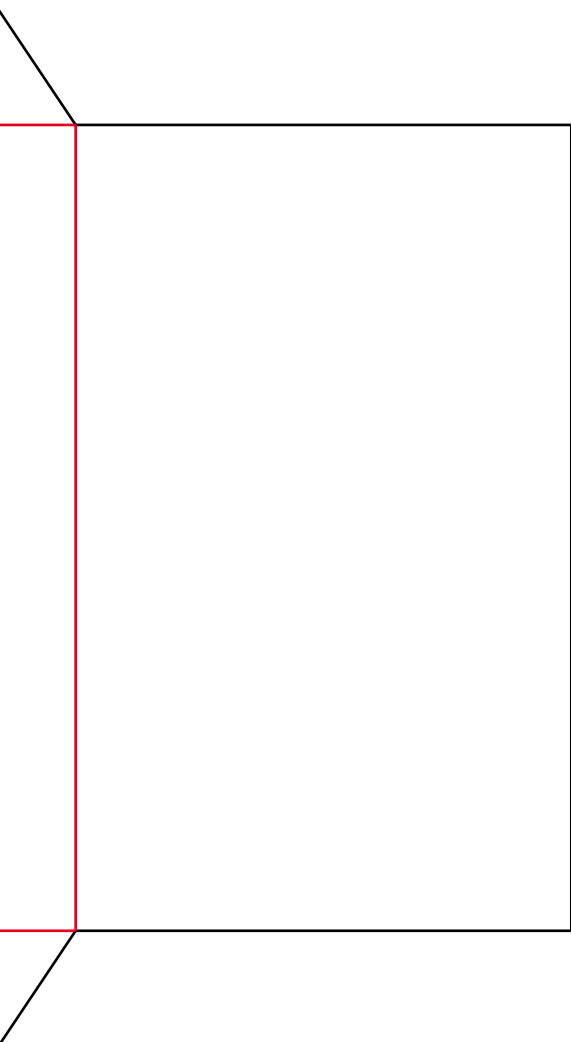
# HOW TO MAKE ENVELOPES

## BY JENNIFERMAKER

4.25" x 4.25" "LINES" ENVELOPE

PART 2

CUT 1



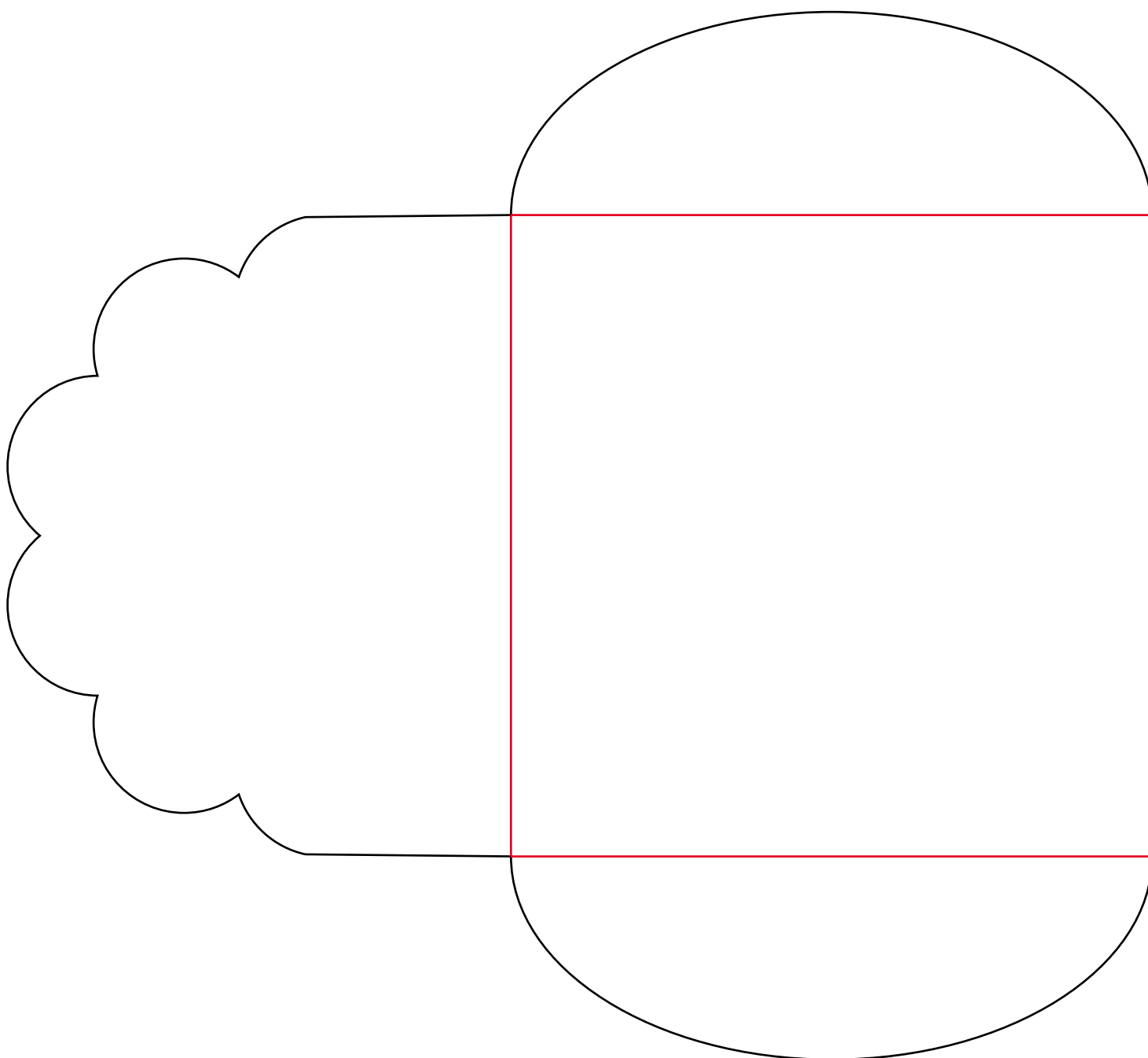
# HOW TO MAKE ENVELOPES

## BY JENNIFERMAKER

**4.25" x 4.25" "SCOOP" ENVELOPE**

**PART 1**

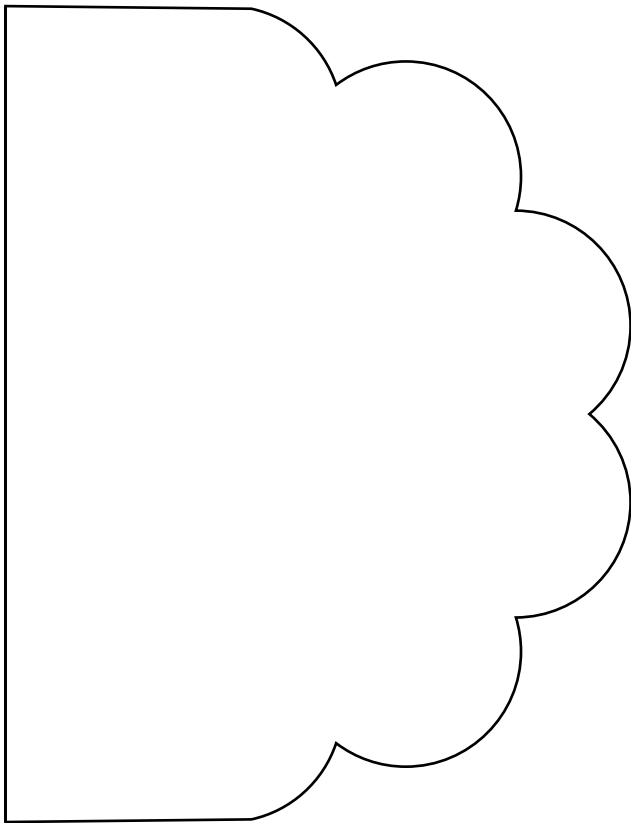
**CUT 1**



# HOW TO MAKE ENVELOPES

## BY JENNIFERMAKER

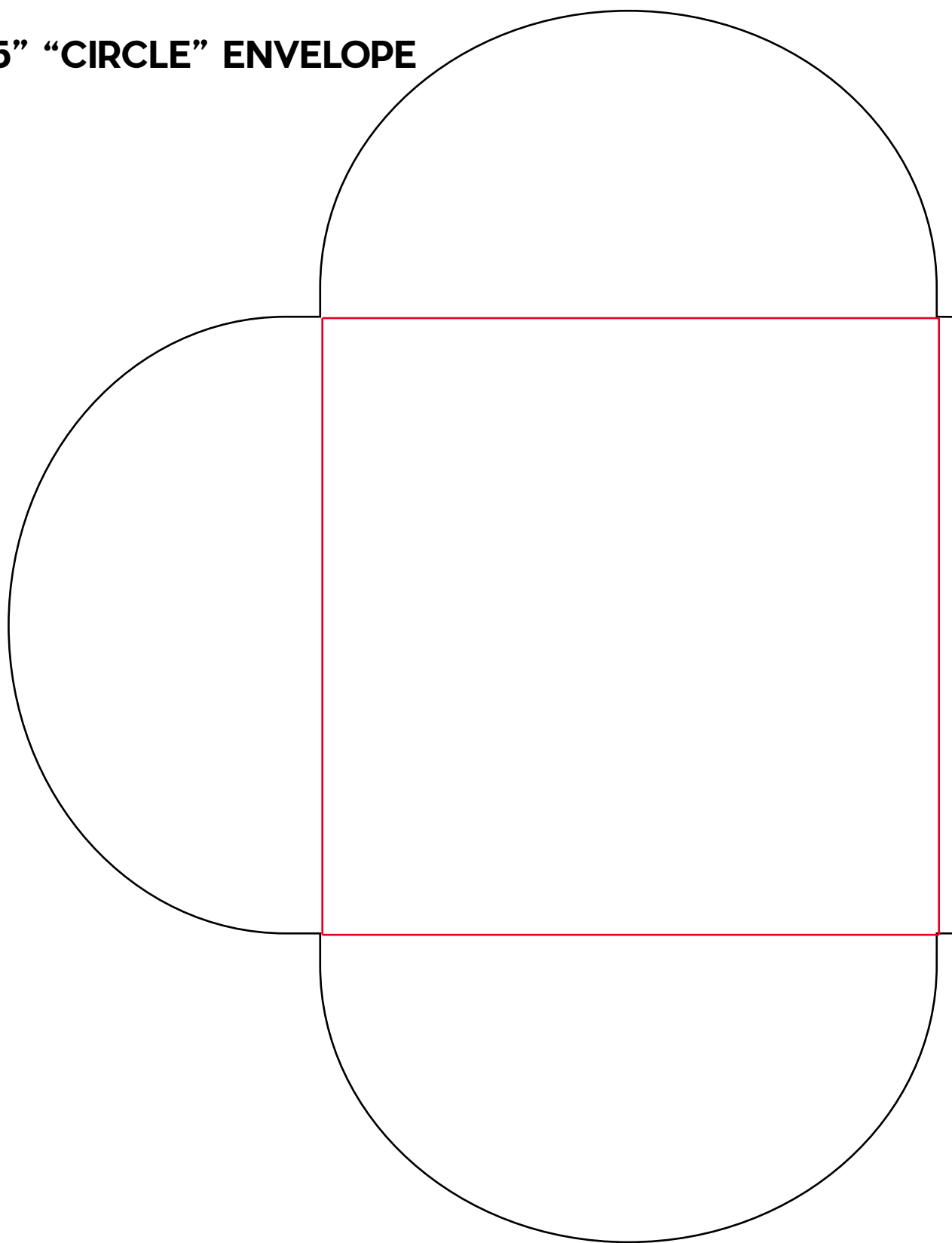
**4.25" x 4.25" "SCOOP" ENVELOPE**  
**PART 1**  
**CUT 1**



# HOW TO MAKE ENVELOPES

BY JENNIFERMAKER

**4.25" x 4.25" "CIRCLE" ENVELOPE**  
**PART 1**  
**CUT 1**



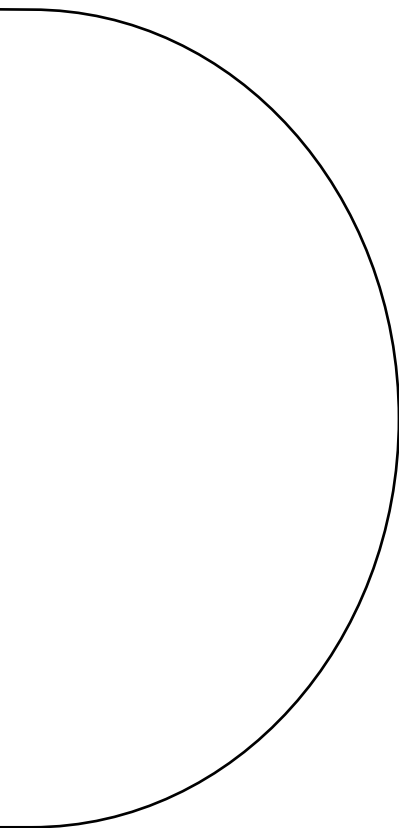
# HOW TO MAKE ENVELOPES

## BY JENNIFERMAKER

**4.25" x 4.25" "CIRCLE" ENVELOPE**

**PART 1**

**CUT 1**



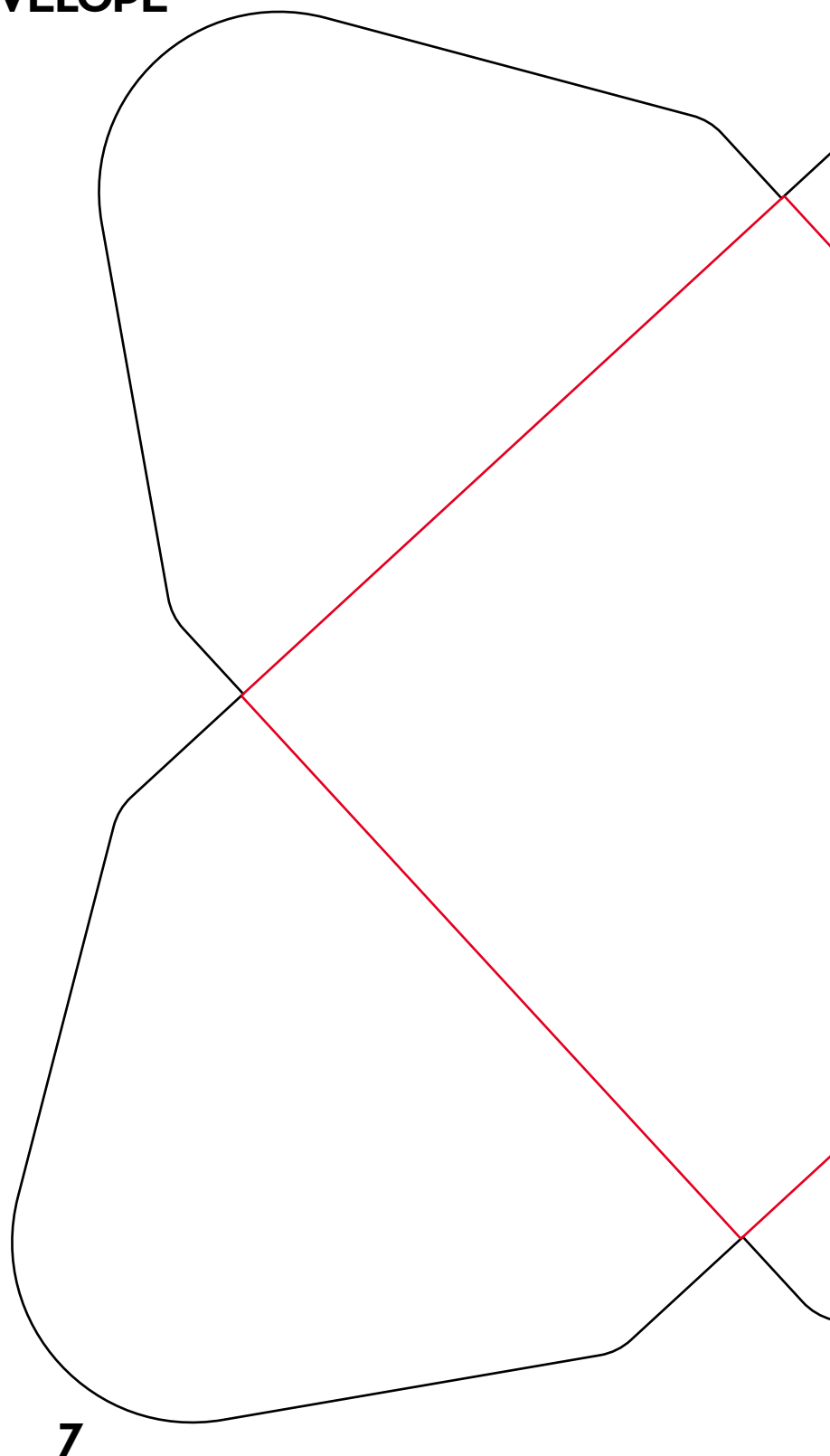
# HOW TO MAKE ENVELOPES

BY JENNIFERMAKER

4.25" x 4.25" "FLAPS" ENVELOPE

PART 1

CUT 1



# HOW TO MAKE ENVELOPES

BY JENNIFERMAKER

4.25" x 4.25" "FLAPS" ENVELOPE  
PART 1  
CUT 1

