

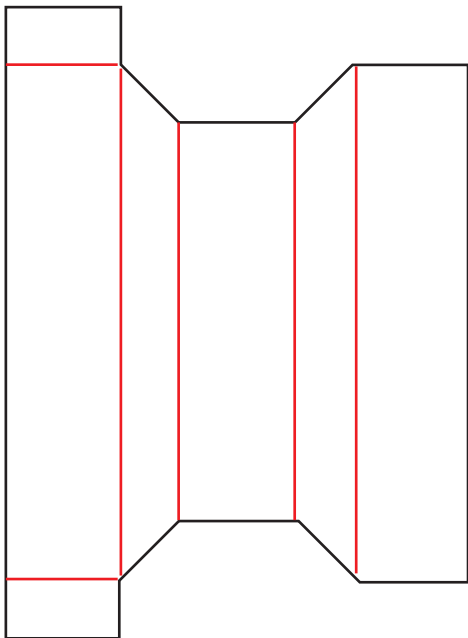
# DIY SHADOW BOX FRAMES

BY JENNIFERMAKER

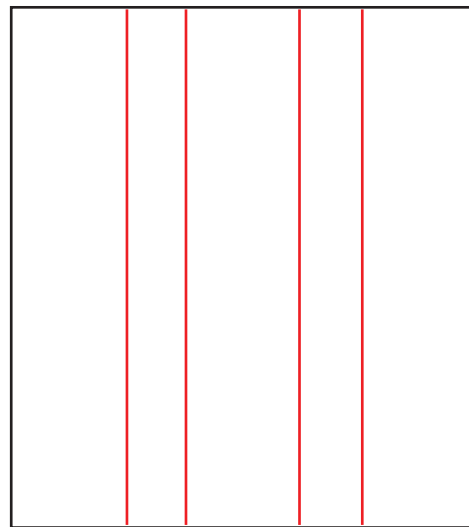
9X9X2

TO MAKE 1 SHADOW BOX YOU WILL NEED  
9.2" x 9.2" CARDSTOCK SQUARE  
WITH A CENTERED SQUARE CUT OUT  
MEASURING 6.8"x 6.8"

CUT 2 EACH OF BOTH SIDES



ACTUAL SIZE  
11" x 8"



ACTUAL SIZE  
9" x 8"

EACH FOLDED AT 2,3,5,6 INCH MARKS

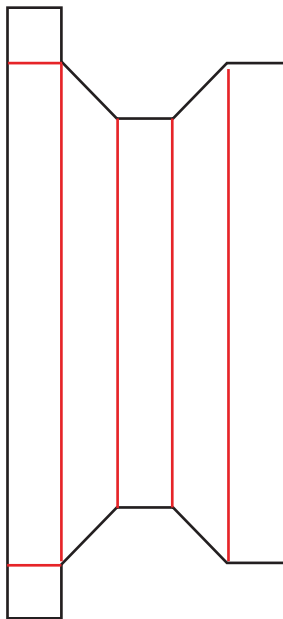
# DIY SHADOW BOX FRAMES

BY JENNIFERMAKER

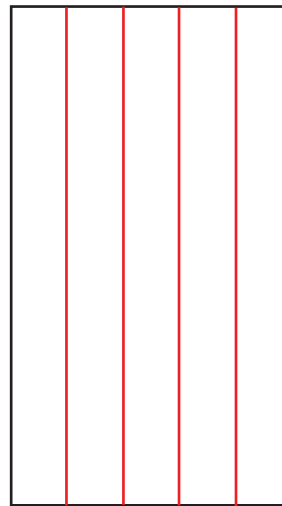
9X9X1

TO MAKE 1 SHADOW BOX YOU WILL NEED  
9.2" x 9.2" CARDSTOCK SQUARE  
WITH A CENTERED SQUARE CUT OUT  
MEASURING 6.8" x 6.8"

CUT 2 EACH OF BOTH SIDES



ACTUAL SIZE  
11" x 5"



ACTUAL SIZE  
9" x 5"

EACH FOLDED AT 1,2,3,4 INCH MARKS

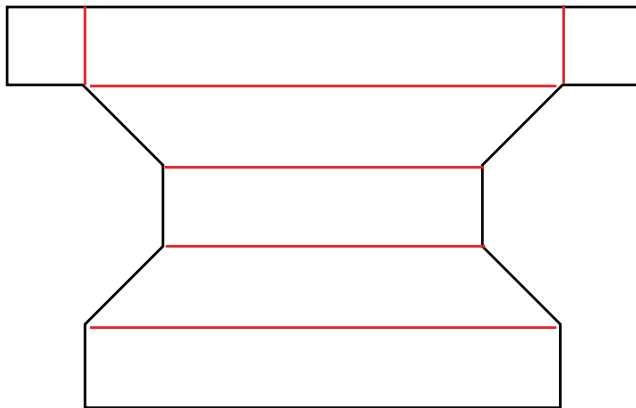
# DIY SHADOW BOX FRAMES

BY JENNIFERMAKER

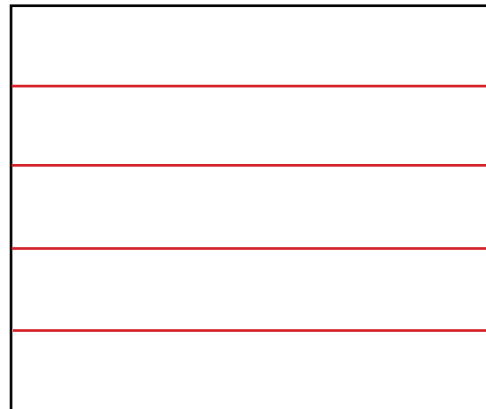
6X6X1

TO MAKE 1 SHADOW BOX YOU WILL NEED  
6.2" x 6.2" CARDSTOCK SQUARE  
WITH A CENTERED SQUARE CUT OUT  
MEASURING 3.8"x 3.8"

CUT 2 EACH OF BOTH SIDES



**ACTUAL SIZE**  
**8"x 5"**



**ACTUAL SIZE**  
**6"x 5"**

**EACH FOLDED AT 1,2,3,4 INCH MARKS**

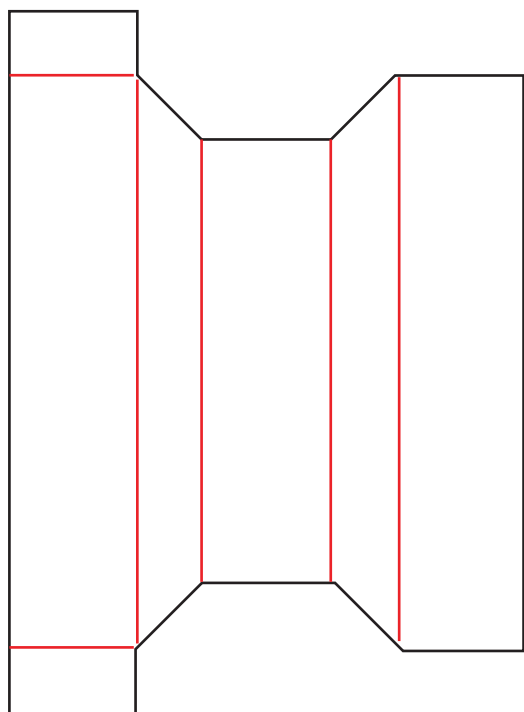
# DIY SHADOW BOX FRAMES

BY JENNIFERMAKER

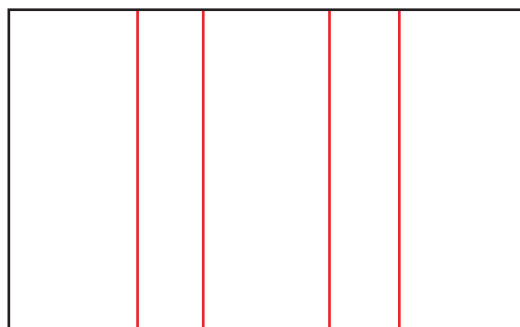
9X5X2

TO MAKE 1 SHADOW BOX YOU WILL NEED  
9.2" x 5.2" CARDSTOCK SQUARE  
WITH A CENTERED SQUARE CUT OUT  
MEASURING 6.8"x 2.8"

CUT 2 EACH OF BOTH SIDES



ACTUAL SIZE  
8"x 5"



ACTUAL SIZE  
6"x 5"

EACH FOLDED AT 2,3,5,6 INCH MARKS